

DESCRIPTION

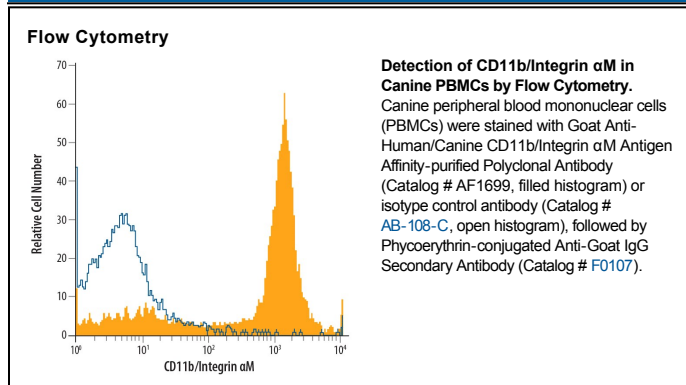
Species Reactivity	Human/Canine
Specificity	Detects human CD11b/Integrin α M in direct ELISAs and Western blots. In direct ELISAs, less than 5% cross-reactivity with recombinant mouse Integrin α M and recombinant human Integrin α E is observed.
Source	Polyclonal Goat IgG
Purification	Antigen Affinity-purified
Immunogen	Mouse myeloma cell line NS0-derived recombinant human CD11b/Integrin α M Phe17-Asn1105 Accession # NP_001139280
Formulation	Lyophilized from a 0.2 μ m filtered solution in PBS with Trehalose. See Certificate of Analysis for details. *Small pack size (-SP) is supplied as a 0.2 μ m filtered solution in PBS.

APPLICATIONS

Please Note: Optimal dilutions should be determined by each laboratory for each application. *General Protocols* are available in the *Technical Information* section on our website.

	Recommended Concentration	Sample
Western Blot	0.1 μ g/mL	Recombinant Human CD11b/Integrin α M
Flow Cytometry	2.5 μ g/ 10^6 cells	See Below
CyTOF-ready	Ready to be labeled using established conjugation methods. No BSA or other carrier proteins that could interfere with conjugation.	

DATA



PREPARATION AND STORAGE

Reconstitution	Reconstitute at 0.2 mg/mL in sterile PBS.
Shipping	The product is shipped at ambient temperature. Upon receipt, store it immediately at the temperature recommended below. *Small pack size (-SP) is shipped with polar packs. Upon receipt, store it immediately at -20 to -70 °C
Stability & Storage	Use a manual defrost freezer and avoid repeated freeze-thaw cycles. <ul style="list-style-type: none"> ● 12 months from date of receipt, -20 to -70 °C as supplied. ● 1 month, 2 to 8 °C under sterile conditions after reconstitution. ● 6 months, -20 to -70 °C under sterile conditions after reconstitution.

BACKGROUND

Human ITGAM (Integrin α M subunit) is a 127kDa (predicted) glycoprotein, a member of the Integrin family of proteins. The Integrin family proteins are heterodimeric transmembrane receptors composed of an α and a β subunit. The Integrin α M subunit, also known as MAC-1 α subunit or CD11b, combines with the Integrin β 2 subunit (CD18) to form the non-covalent heterodimer Integrin α M/ β 2, also known as MAC-1 and complement receptor type 3 (CR3). Integrin α M/ β 2 is expressed on granulocytes, macrophages, dendritic cells and natural killer cells. Upon activation, α M/ β 2 can bind several ligands (including ICAM-1 fibrinogen and the C3 complement fragment C3bi) to mediate phagocyte adhesion, migration and ingestion of complement-opsonized particles. The ECD of human ITGAM shares 75.8% aa sequence identity with canine ITGAM ECD.