

**DESCRIPTION**

<b>Species Reactivity</b>	Human
<b>Specificity</b>	Detects human S100A10 in direct ELISAs and Western blots. In direct ELISAs, greater than 60% cross-reactivity with recombinant mouse S100A10 and less than 2% cross-reactivity with recombinant human S100P is observed.
<b>Source</b>	Polyclonal Goat IgG
<b>Purification</b>	Antigen Affinity-purified
<b>Immunogen</b>	<i>E. coli</i> -derived recombinant human S100A10
<b>Formulation</b>	Lyophilized from a 0.2 µm filtered solution in PBS with Trehalose. See Certificate of Analysis for details. *Small pack size (-SP) is supplied as a 0.2 µm filtered solution in PBS.

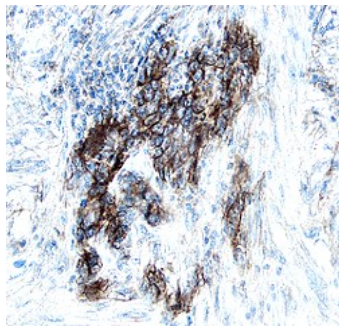
**APPLICATIONS**

**Please Note:** Optimal dilutions should be determined by each laboratory for each application. *General Protocols* are available in the *Technical Information* section on our website.

	<b>Recommended Concentration</b>	<b>Sample</b>
<b>Western Blot</b>	0.1 µg/mL	Recombinant Human S100A10
<b>Immunohistochemistry</b>	5-15 µg/mL	See Below

**DATA**

**Immunohistochemistry**



**S100A10 in Human Kidney Cancer Tissue.** S100A10 was detected in immersion fixed paraffin-embedded sections of human kidney cancer tissue using 5 µg/mL Goat Anti-Human S100A10 Antigen Affinity-purified Polyclonal Antibody (Catalog # AF1698) overnight at 4 °C. Tissue was stained with the Anti-Goat HRP-DAB Cell & Tissue Staining Kit (brown; Catalog # CTS008) and counterstained with hematoxylin (blue). View our protocol for [Chromogenic IHC Staining of Paraffin-embedded Tissue Sections](#).

**PREPARATION AND STORAGE**

<b>Reconstitution</b>	Reconstitute at 0.2 mg/mL in sterile PBS.
<b>Shipping</b>	The product is shipped at ambient temperature. Upon receipt, store it immediately at the temperature recommended below. *Small pack size (-SP) is shipped with polar packs. Upon receipt, store it immediately at -20 to -70 °C
<b>Stability &amp; Storage</b>	<b>Use a manual defrost freezer and avoid repeated freeze-thaw cycles.</b> <ul style="list-style-type: none"> <li>● 12 months from date of receipt, -20 to -70 °C as supplied.</li> <li>● 1 month, 2 to 8 °C under sterile conditions after reconstitution.</li> <li>● 6 months, -20 to -70 °C under sterile conditions after reconstitution.</li> </ul>

**BACKGROUND**

S100A10 is a member of the S100 family of EF hand calcium-binding proteins. It is primarily found in mast cells as heterotetrameric complexes (two annexin A2 subunits and two S100 A10 subunits) that are present intracellularly at the plasma membrane or on the extracellular cell surface. Extracellular S100A10 is a key plasminogen receptor that plays an important role in cellular plasmin production and cellular invasiveness.