

DESCRIPTION

Species Reactivity	Mouse
Specificity	Detects mouse MDL-1/CLEC5A in direct ELISAs and Western blots. In direct ELISAs and Western blots, approximately 5% cross-reactivity with recombinant human MDL-1/CLEC5A is observed.
Source	Polyclonal Goat IgG
Purification	Antigen Affinity-purified
Immunogen	Mouse myeloma cell line NS0-derived recombinant mouse MDL-1/CLEC5A Tyr26-Lys190 Accession # AAI04365
Endotoxin Level	<0.10 EU per 1 µg of the antibody by the LAL method.
Formulation	Lyophilized from a 0.2 µm filtered solution in PBS with Trehalose. See Certificate of Analysis for details. *Small pack size (-SP) is supplied either lyophilized or as a 0.2 µm filtered solution in PBS.

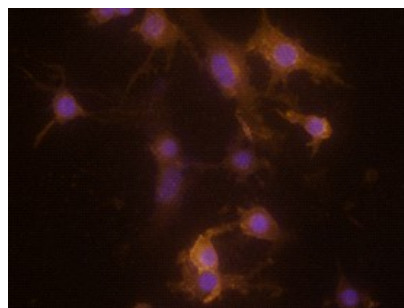
APPLICATIONS

Please Note: Optimal dilutions should be determined by each laboratory for each application. [General Protocols](#) are available in the [Technical Information](#) section on our website.

	Recommended Concentration	Sample
Western Blot	0.1 µg/mL	Recombinant Mouse MDL-1/CLEC5A
Immunocytochemistry	5-15 µg/mL	See Below

DATA

Immunocytochemistry



MDL-1/CLEC5A in RAW 264.7 Mouse Cell Line. MDL-1/CLEC5A was detected in immersion fixed RAW 264.7 mouse monocyte/macrophage cell line using Goat Anti-Mouse MDL-1/CLEC5A Antigen Affinity-purified Polyclonal Antibody (Catalog # AF1639) at 1.7 µg/mL for 3 hours at room temperature. Cells were stained using the NorthernLights™ 557-conjugated Anti-Goat IgG Secondary Antibody (red; Catalog # NL001) and counterstained with DAPI(blue). Specific staining was localized to plasma membrane and cytoplasm. View our protocol for [Fluorescent ICC Staining of Cells on Coverslips](#).

PREPARATION AND STORAGE

Reconstitution	Reconstitute at 0.2 mg/mL in sterile PBS.
Shipping	The product is shipped at ambient temperature. Upon receipt, store it immediately at the temperature recommended below. *Small pack size (-SP) is shipped with polar packs. Upon receipt, store it immediately at -20 to -70 °C
Stability & Storage	Use a manual defrost freezer and avoid repeated freeze-thaw cycles. <ul style="list-style-type: none"> • 12 months from date of receipt, -20 to -70 °C as supplied. • 1 month, 2 to 8 °C under sterile conditions after reconstitution. • 6 months, -20 to -70 °C under sterile conditions after reconstitution.

BACKGROUND

MDL-1 is an approximately 40 kDa transmembrane glycoprotein belonging to the C-type lectin superfamily (CLEC5A). MDL-1 is expressed on immature myeloid cells, monocytes, macrophages, dendritic cells, neutrophils, NK cells, and osteocytes. It contains a charged lysine in the transmembrane region that enables it to associate with DAP12 and deliver an activating signal. MDL-1 mediates inflammatory responses during autoimmune arthritis and upon binding to Dengue and Japanese encephalitis viruses. The extracellular domain (ECD) of MDL-1 contains a juxtamembrane stalk region and one C-type lectin domain. Within the ECD, mouse and human MDL-1 share 67% amino acid sequence identity. In mouse, alternative splicing generates a short isoform with a 25 aa deletion in the stalk region.