

DESCRIPTION

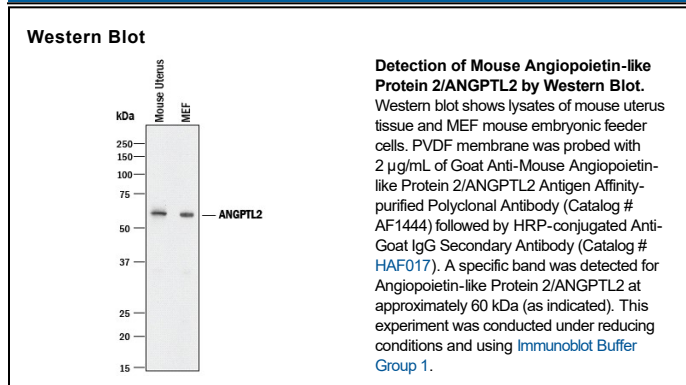
Species Reactivity	Mouse
Specificity	Detects mouse Angiopoietin-like Protein 2/ANGPTL2 in direct ELISAs and Western blots. In direct ELISAs, less than 1% cross-reactivity with recombinant mouse (rm) ANGPTL6 and rmANGPTL1 is observed.
Source	Polyclonal Goat IgG
Purification	Antigen Affinity-purified
Immunogen	<i>E. coli</i> -derived recombinant mouse Angiopoietin-like 2 Pro23-His493 Accession # Q9R045
Formulation	Lyophilized from a 0.2 µm filtered solution in PBS with Trehalose. See Certificate of Analysis for details. *Small pack size (-SP) is supplied either lyophilized or as a 0.2 µm filtered solution in PBS.

APPLICATIONS

Please Note: Optimal dilutions should be determined by each laboratory for each application. *General Protocols* are available in the *Technical Information* section on our website.

	Recommended Concentration	Sample
Western Blot	2 µg/mL	See Below
Immunohistochemistry	5-15 µg/mL	Immersion fixed frozen sections of mouse embryo (E15), skeletal muscle, and thymus

DATA



PREPARATION AND STORAGE

Reconstitution	Reconstitute at 0.2 mg/mL in sterile PBS.
Shipping	The product is shipped at ambient temperature. Upon receipt, store it immediately at the temperature recommended below. *Small pack size (-SP) is shipped with polar packs. Upon receipt, store it immediately at -20 to -70 °C
Stability & Storage	Use a manual defrost freezer and avoid repeated freeze-thaw cycles. <ul style="list-style-type: none"> ● 12 months from date of receipt, -20 to -70 °C as supplied. ● 1 month, 2 to 8 °C under sterile conditions after reconstitution. ● 6 months, -20 to -70 °C under sterile conditions after reconstitution.

BACKGROUND

Angiopoietinlike2 (ANGPTL2), also known as ANGRP2, is a secreted glycoprotein structurally related to Angiopoietin. It does not bind the Tie1 or Tie2 receptors. ANGPTL2 induces sprouting but is not mitogenic in endothelial cells.