

DESCRIPTION

Species Reactivity	Human/Rat
Specificity	Detects human α -Fetoprotein in direct ELISAs and Western blots.
Source	Polyclonal Chicken IgY
Purification	Antigen Affinity-purified from egg yolks
Immunogen	Human umbilical cord serum-derived α -Fetoprotein
Formulation	Lyophilized from a 0.2 μ m filtered solution in PBS with Trehalose. See Certificate of Analysis for details. *Small pack size (-SP) is supplied either lyophilized or as a 0.2 μ m filtered solution in PBS.

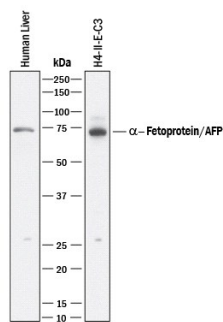
APPLICATIONS

Please Note: Optimal dilutions should be determined by each laboratory for each application. *General Protocols* are available in the *Technical Information* section on our website.

	Recommended Concentration	Sample
Western Blot	0.2 μ g/mL	See Below
Immunocytochemistry	8-25 μ g/mL	See Below
Immunohistochemistry	5-15 μ g/mL	See Below
Simple Western	2 μ g/mL	See Below
Knockout Validated	α -Fetoprotein is specifically detected in HepG2 human hepatocellular carcinoma cell line but is not detectable in α -Fetoprotein knockout HepG2 cell line.	

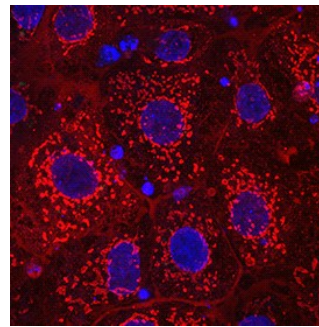
DATA

Western Blot



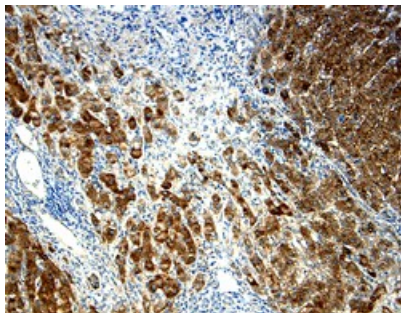
Detection of Human and Rat α -Fetoprotein/AFP by Western Blot. Western blot shows lysates of human liver tissue and H4-II-E-C3 rat hepatoma cell line. PVDF membrane was probed with 0.2 μ g/mL of Chicken Anti-Human/Rat α -Fetoprotein/AFP Antigen Affinity-purified Polyclonal Antibody (Catalog # AF1369) followed by HRP-conjugated Anti-Chicken IgY Secondary Antibody. A specific band was detected for α -Fetoprotein/AFP at approximately 70 kDa (as indicated). This experiment was conducted under reducing conditions and using Immunoblot Buffer Group 1.

Immunocytochemistry



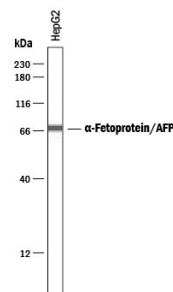
α -Fetoprotein/AFP in BG01V Human Embryonic Stem Cells. α -Fetoprotein/AFP was detected in immersion fixed BG01V human embryonic stem cells using Chicken Anti-Human/Rat α -Fetoprotein/AFP Antigen Affinity-purified Polyclonal Antibody (Catalog # AF1369) at 10 μ g/mL for 3 hours at room temperature. Cells were stained using the NorthernLights™ 557-conjugated Anti-Chicken IgY Secondary Antibody (red; Catalog # NL016) and counterstained with DAPI(blue). Specific staining was localized to cytoplasm. View our protocol for [Fluorescent ICC Staining of Cells on Coverslips](#).

Immunohistochemistry



α -Fetoprotein/AFP in Human Liver cancer α -Fetoprotein/AFP was detected in immersion fixed paraffin-embedded sections of human liver cancer using 15 μ g/mL Chicken anti-Human/Rat α -Fetoprotein/AFP Antigen Affinity-purified Polyclonal Antibody (Catalog # AF1369) overnight at 4 °C. Tissue was stained (brown) and counterstained with hematoxylin (blue). View our protocol for [Chromogenic IHC Staining of Paraffin-embedded Tissue Sections](#).

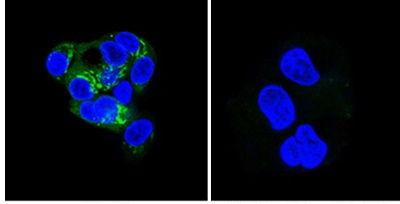
Simple Western



Detection of Human α -Fetoprotein/AFP by Simple Western™. Simple Western lane view shows lysates of HepG2 human hepatocellular carcinoma cell line, loaded at 0.2 mg/mL. A specific band was detected for α -Fetoprotein/AFP at approximately 70 kDa (as indicated) using 2 μ g/mL of Chicken Anti-Human/Rat α -Fetoprotein/AFP Antigen Affinity-purified Polyclonal Antibody (Catalog # AF1369) followed by HRP-conjugated Anti-Chicken IgY Secondary Antibody. This experiment was conducted under reducing conditions and using the 12-230 kDa separation system.



Knockout Validated



HepG2

HepG2 α -Fetoprotein KO

α -Fetoprotein/AFP Specificity is Shown by Immunocytochemistry in Knockout Cell Line. α -Fetoprotein/AFP was detected in immersion fixed HepG2 human hepatocellular carcinoma cell line but is not detected in α -Fetoprotein/AFP knockout (KO) HepG2 Human Cell Line cell line using Chicken Anti-Human/Rat α -Fetoprotein/AFP Antigen Affinity-purified Polyclonal Antibody (Catalog # AF1369) at 10 μ g/mL for 3 hours at room temperature. Cells were stained using the NorthernLights™ 493-conjugated Anti-Chicken IgY Secondary Antibody (green; Catalog # NL018) and counterstained with DAPI (blue). Specific staining was localized to cytoplasm. View our protocol for [Fluorescent ICC Staining of Cells on Coverslips](#).

PREPARATION AND STORAGE

Reconstitution	Reconstitute at 0.2 mg/mL in sterile PBS.
Shipping	The product is shipped at ambient temperature. Upon receipt, store it immediately at the temperature recommended below. *Small pack size (-SP) is shipped with polar packs. Upon receipt, store it immediately at -20 to -70 °C
Stability & Storage	Use a manual defrost freezer and avoid repeated freeze-thaw cycles. <ul style="list-style-type: none"> ● 12 months from date of receipt, -20 to -70 °C as supplied. ● 1 month, 2 to 8 °C under sterile conditions after reconstitution. ● 6 months, -20 to -70 °C under sterile conditions after reconstitution.

BACKGROUND

α -Fetoprotein is a major plasma protein in the fetus. Its concentration is normally low in the adult except when produced by certain tumors.