

DESCRIPTION

Species Reactivity	Human
Specificity	Detects human SLPI in direct ELISAs and Western blots. In direct ELISAs, approximately 20% cross-reactivity with mouse SLPI is observed.
Source	Polyclonal Goat IgG
Purification	Antigen Affinity-purified
Immunogen	<i>E. coli</i> -derived recombinant human SLPI
Formulation	Lyophilized from a 0.2 µm filtered solution in PBS with Trehalose. See Certificate of Analysis for details. *Small pack size (-SP) is supplied as a 0.2 µm filtered solution in PBS.

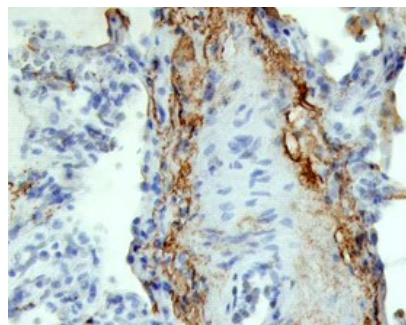
APPLICATIONS

Please Note: Optimal dilutions should be determined by each laboratory for each application. *General Protocols* are available in the *Technical Information* section on our website.

	Recommended Concentration	Sample
Western Blot	0.1 µg/mL	Recombinant Human SLPI (Catalog # 1274-PI)
Immunohistochemistry	5-15 µg/mL	See Below
Neutralization	Measured by its ability to neutralize Recombinant Human SLPI (0.125 µg/mL, Catalog # 1274-PI) inhibition of Trypsin (0.05 µg/mL) cleavage of the fluorogenic peptide substrate Mca-RPKPVE-Nval-WRK(Dnp)-NH ₂ (10 µM, Catalog # ES002). The Neutralization Dose (ND ₅₀) is typically 2 µg/mL.	

DATA

Immunohistochemistry



SLPI in Human Lung.

SLPI was detected in immersion fixed paraffin-embedded sections of human lung using Goat Anti-Human SLPI Antigen Affinity-purified Polyclonal Antibody (Catalog # AF1274) at 10 µg/mL overnight at 4 °C. Tissue was stained using the Anti-Goat HRP-DAB Cell & Tissue Staining Kit (brown; Catalog # CTS008) and counterstained with hematoxylin (blue). Specific staining was localized to cell surfaces and cytoplasm. View our protocol for [Chromogenic IHC Staining of Paraffin-embedded Tissue Sections](#).

PREPARATION AND STORAGE

Reconstitution	Reconstitute at 0.2 mg/mL in sterile PBS.
Shipping	The product is shipped at ambient temperature. Upon receipt, store it immediately at the temperature recommended below. *Small pack size (-SP) is shipped with polar packs. Upon receipt, store it immediately at -20 to -70 °C
Stability & Storage	Use a manual defrost freezer and avoid repeated freeze-thaw cycles. <ul style="list-style-type: none"> ● 12 months from date of receipt, -20 to -70 °C as supplied. ● 1 month, 2 to 8 °C under sterile conditions after reconstitution. ● 6 months, -20 to -70 °C under sterile conditions after reconstitution.

BACKGROUND

SLPI is a member of the Serpin family and is primarily expressed in secretory glandular epithelial cells. It is found in various secretory fluids and functions as a potent inhibitor of many proteolytic enzymes. SLPI can modulate cell proliferation and has been shown to have anti-inflammatory, anti-viral, and anti-bacterial activities (1, 2).

References:

1. Zhang, D. *et al.* (2002) J. Biol. Chem. **277**:29999.
2. Taggart, C.C. *et al.* (2002) J. Biol. Chem. **277**:33648.