

DESCRIPTION

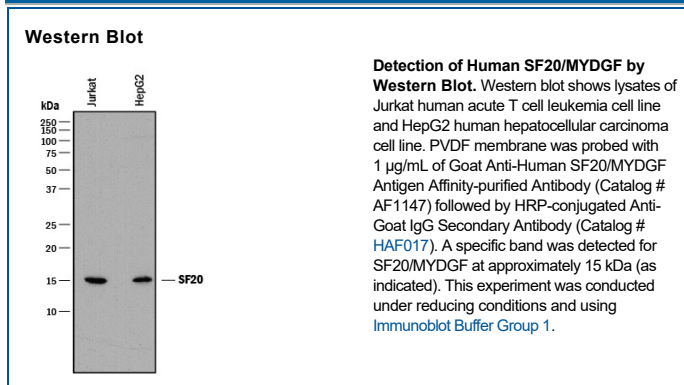
Species Reactivity	Human
Specificity	Detects human SF20/MYDGF in direct ELISAs and Western blots. In direct ELISAs, approximately 10% cross-reactivity with recombinant mouse SF20/MYDGF is observed.
Source	Polyclonal Goat IgG
Purification	Antigen Affinity-purified
Immunogen	E. coli-derived recombinant human SF20/MYDGF Val32-Leu173 Accession # Q969H8
Formulation	Lyophilized from a 0.2 µm filtered solution in PBS with Trehalose. See Certificate of Analysis for details. *Small pack size (-SP) is supplied either lyophilized or as a 0.2 µm filtered solution in PBS.

APPLICATIONS

Please Note: Optimal dilutions should be determined by each laboratory for each application. [General Protocols](#) are available in the Technical Information section on our website.

	Recommended Concentration	Sample
Western Blot	1 µg/mL	See Below

DATA



PREPARATION AND STORAGE

Reconstitution	Reconstitute at 0.2 mg/mL in sterile PBS.
Shipping	The product is shipped at ambient temperature. Upon receipt, store it immediately at the temperature recommended below. *Small pack size (-SP) is shipped with polar packs. Upon receipt, store it immediately at -20 to -70 °C
Stability & Storage	Use a manual defrost freezer and avoid repeated freeze-thaw cycles. <ul style="list-style-type: none"> • 12 months from date of receipt, -20 to -70 °C as supplied. • 1 month, 2 to 8 °C under sterile conditions after reconstitution. • 6 months, -20 to -70 °C under sterile conditions after reconstitution.

BACKGROUND

Human SF20 (Stromal cell-derived growth factor SF20, C19orf10, MYDGF1, Myeloid-derived growth factor1 also formerly known as IL25) is a 15 kDa (predicted) bone marrow-derived monocyte and paracrine-acting protein that promotes cardiac myocyte survival and adaptive angiogenesis for cardiac protection and/or repair after myocardial infarction. SF20 stimulates endothelial cell proliferation through a MAPK1/3-, STAT3- and CCND1 mediated signaling pathway. It is thought to inhibit cardiac myocyte apoptosis in a PI3K/AKT-dependent signaling pathway and is involved in endothelial cell proliferation and angiogenesis. Human SF20 shares 87% aa identity with mouse SF20.