

DESCRIPTION

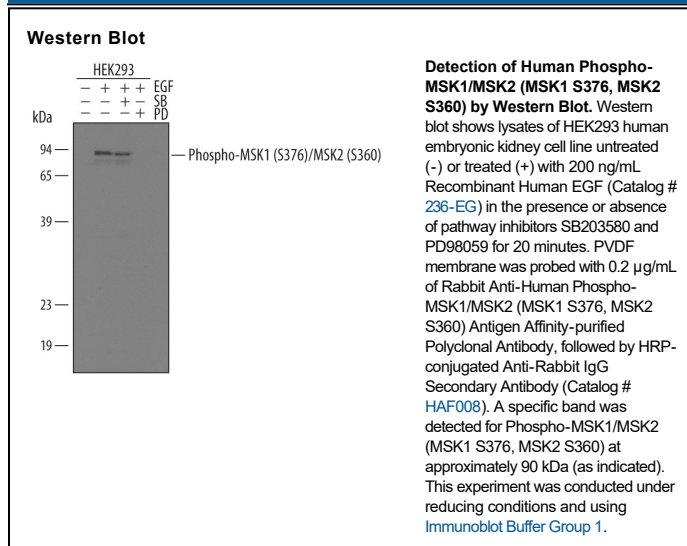
Species Reactivity	Human
Specificity	Detects human MSK1 and MSK2 when phosphorylated at S376 and S360, respectively. The amino acid sequence surrounding S360 of mouse MSK2 is identical to the phosphopeptide antigen.
Source	Polyclonal Rabbit IgG
Purification	Antigen Affinity-purified
Immunogen	Phosphopeptide containing human MSK1 S376 site
Formulation	Lyophilized from a 0.2 µm filtered solution in PBS with Trehalose. See Certificate of Analysis for details. *Small pack size (-SP) is supplied either lyophilized or as a 0.2 µm filtered solution in PBS.

APPLICATIONS

Please Note: Optimal dilutions should be determined by each laboratory for each application. *General Protocols* are available in the *Technical Information* section on our website.

	Recommended Concentration	Sample
Western Blot	0.2 µg/mL	See Below

DATA



PREPARATION AND STORAGE

Reconstitution	Reconstitute at 0.2 mg/mL in sterile PBS.
Shipping	The product is shipped at ambient temperature. Upon receipt, store it immediately at the temperature recommended below. *Small pack size (-SP) is shipped with polar packs. Upon receipt, store it immediately at -20 to -70 °C
Stability & Storage	Use a manual defrost freezer and avoid repeated freeze-thaw cycles. <ul style="list-style-type: none"> ● 12 months from date of receipt, -20 to -70 °C as supplied. ● 1 month, 2 to 8 °C under sterile conditions after reconstitution. ● 6 months, -20 to -70 °C under sterile conditions after reconstitution.