

DESCRIPTION

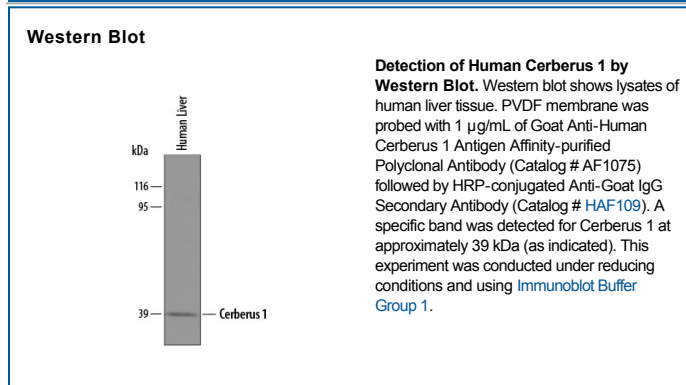
Species Reactivity	Human
Specificity	Detects human Cerberus 1 in direct ELISAs and Western blots. In direct ELISAs, less than 2% cross-reactivity with recombinant human DAN, recombinant mouse Gremlin, and recombinant chicken Caronte is observed.
Source	Polyclonal Goat IgG
Purification	Antigen Affinity-purified
Immunogen	<i>S. frugiperda</i> insect ovarian cell line Sf21-derived recombinant human Cerberus 1 Thy18-Ala267 Accession # O95813
Formulation	Lyophilized from a 0.2 µm filtered solution in PBS with Trehalose. See Certificate of Analysis for details. *Small pack size (-SP) is supplied as a 0.2 µm filtered solution in PBS.

APPLICATIONS

Please Note: Optimal dilutions should be determined by each laboratory for each application. [General Protocols](#) are available in the [Technical Information](#) section on our website.

	Recommended Concentration	Sample
Western Blot	1 µg/mL	See Below

DATA



PREPARATION AND STORAGE

Reconstitution	Reconstitute at 0.2 mg/mL in sterile PBS.
Shipping	The product is shipped at ambient temperature. Upon receipt, store it immediately at the temperature recommended below. *Small pack size (-SP) is shipped with polar packs. Upon receipt, store it immediately at -20 to -70 °C
Stability & Storage	Use a manual defrost freezer and avoid repeated freeze-thaw cycles. <ul style="list-style-type: none"> ● 12 months from date of receipt, -20 to -70 °C as supplied. ● 1 month, 2 to 8 °C under sterile conditions after reconstitution. ● 6 months, -20 to -70 °C under sterile conditions after reconstitution.

BACKGROUND

Cerberus 1 functions during development by binding to and antagonizing some members of the bone morphogenetic protein (BMP) family. Cerberus 1 is alternatively known as cerberus-related 1 and is a homolog of *Xenopus* cerberus.