

DESCRIPTION

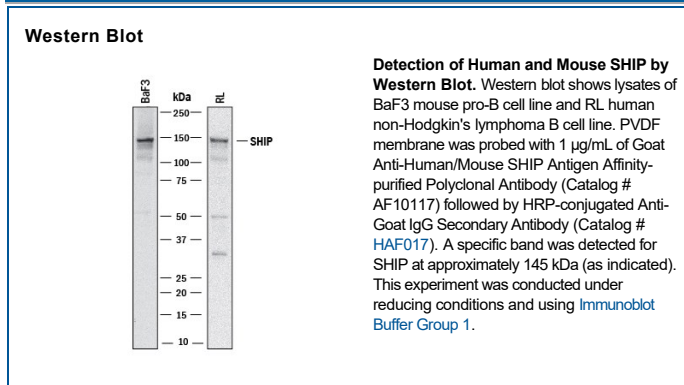
Species Reactivity	Human/Mouse
Specificity	Detects mouse SHIP in direct ELISAs.
Source	Polyclonal Goat IgG
Purification	Antigen Affinity-purified
Immunogen	<i>E. coli</i> -derived recombinant mouse SHIP Glu874-Thr941 Accession # Q9ES52
Formulation	Lyophilized from a 0.2 µm filtered solution in PBS with Trehalose. See Certificate of Analysis for details. *Small pack size (-SP) is supplied either lyophilized or as a 0.2 µm filtered solution in PBS.

APPLICATIONS

Please Note: Optimal dilutions should be determined by each laboratory for each application. *General Protocols* are available in the *Technical Information* section on our website.

	Recommended Concentration	Sample
Western Blot	1 µg/mL	See Below

DATA



PREPARATION AND STORAGE

Reconstitution	Reconstitute at 0.2 mg/mL in sterile PBS.
Shipping	The product is shipped at ambient temperature. Upon receipt, store it immediately at the temperature recommended below. *Small pack size (-SP) is shipped with polar packs. Upon receipt, store it immediately at -20 to -70 °C
Stability & Storage	Use a manual defrost freezer and avoid repeated freeze-thaw cycles. <ul style="list-style-type: none"> • 12 months from date of receipt, -20 to -70 °C as supplied. • 1 month, 2 to 8 °C under sterile conditions after reconstitution. • 6 months, -20 to -70 °C under sterile conditions after reconstitution.

BACKGROUND

SH2-containing inositol phosphatase (SHIP), also known as INPP5D, is a negative regulator of signal transduction in hematopoietic cells. Targeted disruption of SHIP in mice leads to a myeloproliferative disorder. Several laboratories have demonstrated the presence of multiple forms of SHIP, including 145 kDa, 135 kDa, and C-terminal truncated forms at 125 kDa and 110 kDa in some cell types.