

#### DESCRIPTION

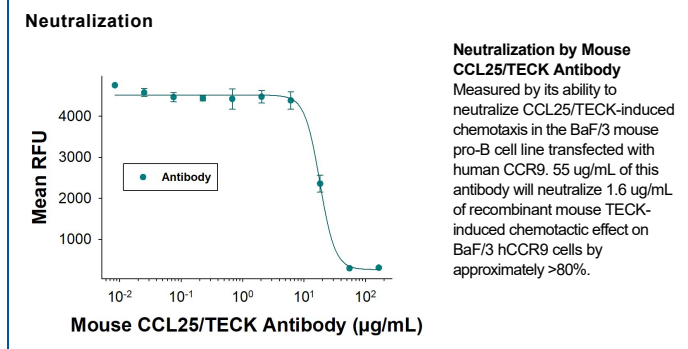
<b>Species Reactivity</b>	Mouse
<b>Specificity</b>	Detects mouse CCL25/TECK in direct ELISAs and Western blots. In direct ELISAs, less than 1% cross-reactivity with recombinant human TECK is observed.
<b>Source</b>	Polyclonal Goat IgG
<b>Purification</b>	Antigen Affinity-purified
<b>Immunogen</b>	<i>E. coli</i> -derived recombinant mouse CCL25/TECK Gln24-Asn144 Accession # O35903
<b>Endotoxin Level</b>	<0.10 EU per 1 µg of the antibody by the LAL method.
<b>Formulation</b>	Lyophilized from a 0.2 µm filtered solution in PBS with Trehalose. See Certificate of Analysis for details. *Small pack size (-SP) is supplied either lyophilized or as a 0.2 µm filtered solution in PBS.

#### APPLICATIONS

**Please Note:** Optimal dilutions should be determined by each laboratory for each application. [General Protocols](#) are available in the Technical Information section on our website.

	<b>Recommended Concentration</b>	<b>Sample</b>
<b>Western Blot</b>	0.1 µg/mL	Recombinant Mouse CCL25/TECK (Catalog # <a href="#">481-TK</a> )
<b>Neutralization</b>	Measured by its ability to neutralize CCL25/TECK-induced chemotaxis in the BaF/3 mouse pro-B cell line transfected with human CCR9. 55 µg/mL of this antibody will neutralize 1.6 µg/mL of recombinant mouse TECK-induced chemotactic effect on BaF/3 hCCR9 cells by approximately >80%.	

#### DATA



#### PREPARATION AND STORAGE

<b>Reconstitution</b>	Reconstitute at 0.2 mg/mL in sterile PBS. For liquid material, refer to CoA for concentration.
<b>Shipping</b>	Lyophilized product is shipped at ambient temperature. Liquid small pack size (-SP) is shipped with polar packs. Upon receipt, store immediately at the temperature recommended below.
<b>Stability &amp; Storage</b>	Use a manual defrost freezer and avoid repeated freeze-thaw cycles. <ul style="list-style-type: none"> <li>12 months from date of receipt, -20 to -70 °C as supplied.</li> <li>1 month, 2 to 8 °C under sterile conditions after reconstitution.</li> <li>6 months, -20 to -70 °C under sterile conditions after reconstitution.</li> </ul>

#### BACKGROUND

CCL25 (thymus-expressed chemokine) is a novel CC chemokine that is distantly related (twenty-some % amino acid sequence identity) to other CC chemokines. Mouse CCL25 cDNA encodes a 144 amino acid residue precursor protein with a 23 amino acid residue signal peptide that is cleaved to yield a 121 residue mature protein. Human CCL25 cDNA has also been cloned and shown to encode a 151 amino acid protein that exhibits 49% amino acid sequence identity to mouse CCL25. The expression of human and mouse CCL25 was shown to be highly restricted to the thymus and small intestine. Although dendritic cells have been demonstrated to be the source of CCL25 production in the thymus, dendritic cells derived from bone marrow do not express CCL25. The gene for mouse CCL25 has been mapped to chromosome 8 rather than chromosome 11 where many mouse CC chemokines are clustered. Recombinant mouse CCL25 has been shown to be chemotactic for activated macrophages, dendritic cells and thymocytes.

#### References:

1. Vicari, A.P. *et al.* (1997) *Immunity* 7:291.