

DESCRIPTION

Species Reactivity	Human/Mouse
Specificity	Detects human and mouse MMP-24/MT5-MMP in Western blots.
Source	Polyclonal Rabbit IgG
Purification	Protein A or G purified
Immunogen	<i>E. coli</i> -derived recombinant human MMP-24/MT5-MMP
Formulation	Lyophilized from a 0.2 µm filtered solution in PBS with Trehalose. See Certificate of Analysis for details.

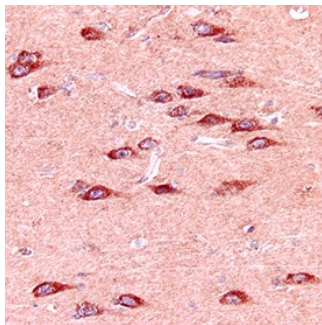
APPLICATIONS

Please Note: Optimal dilutions should be determined by each laboratory for each application. *General Protocols* are available in the *Technical Information* section on our website.

	Recommended Concentration	Sample
Western Blot	1 µg/mL	Recombinant Human/Mouse MMP-24/MT5-MMP Western Blot Standard (Catalog # WBC014)
Immunohistochemistry	5-15 µg/mL	See Below
Immunoprecipitation	25 µg/mL	Conditioned cell culture medium spiked with Recombinant Human or Recombinant Mouse MMP-24/MT5-MMP, see our available Western blot detection antibodies

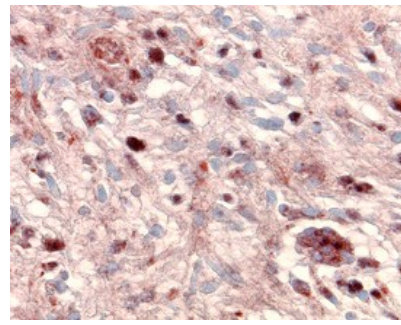
DATA

Immunohistochemistry



MMP-24 in Human Brain. MMP-24 was detected in immersion fixed paraffin-embedded sections of human brain using Rabbit Anti-Human/Mouse MMP-24/MT5-MMP Polyclonal Antibody (Catalog # AB924) at 15 µg/mL overnight at 4 °C. Tissue was stained using the Anti-Rabbit HRP-AEC Cell & Tissue Staining Kit (red; Catalog # CTS006) and counterstained with hematoxylin (blue). Specific labeling was localized to the cytoplasm of neurons. View our protocol for [Chromogenic IHC Staining of Paraffin-embedded Tissue Sections](#).

Immunohistochemistry



MMP-24 in Human Astrocytoma. MMP-24 was detected in immersion fixed paraffin-embedded sections of human brain (astrocytoma) using Rabbit Anti-Human/Mouse MMP-24/MT5-MMP Polyclonal Antibody (Catalog # AB924) at 15 µg/mL overnight at 4 °C. Tissue was stained using the Anti-Rabbit HRP-AEC Cell & Tissue Staining Kit (red; Catalog # CTS006) and counterstained with hematoxylin (blue). Specific labeling was localized to the cytoplasm of cancer cells. View our protocol for [Chromogenic IHC Staining of Paraffin-embedded Tissue Sections](#).

PREPARATION AND STORAGE

Reconstitution	Reconstitute at 0.2 mg/mL in sterile PBS.
Shipping	The product is shipped at ambient temperature. Upon receipt, store it immediately at the temperature recommended below.
Stability & Storage	<p>Use a manual defrost freezer and avoid repeated freeze-thaw cycles.</p> <ul style="list-style-type: none"> ● 12 months from date of receipt, -20 to -70 °C as supplied. ● 1 month, 2 to 8 °C under sterile conditions after reconstitution. ● 6 months, -20 to -70 °C under sterile conditions after reconstitution.