

## DESCRIPTION

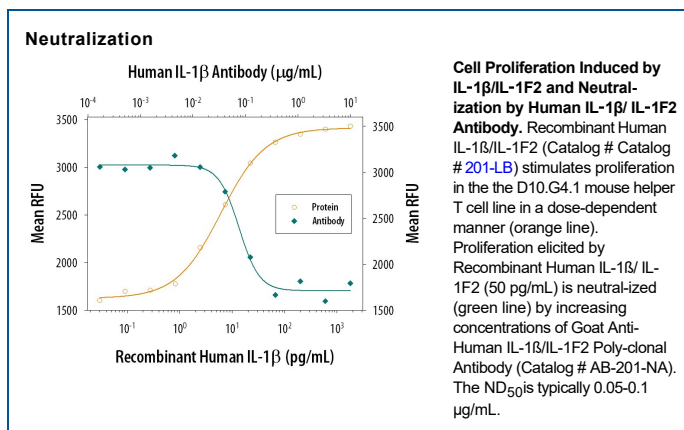
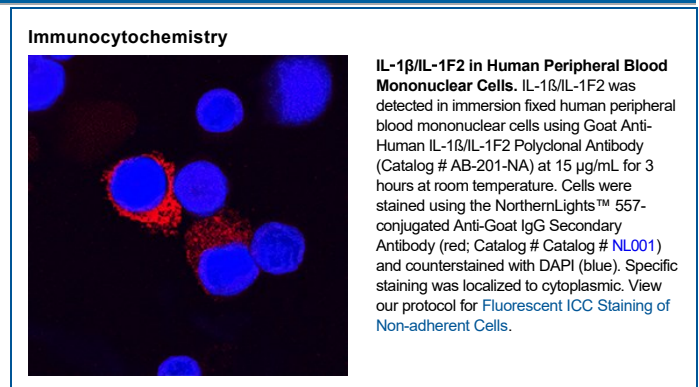
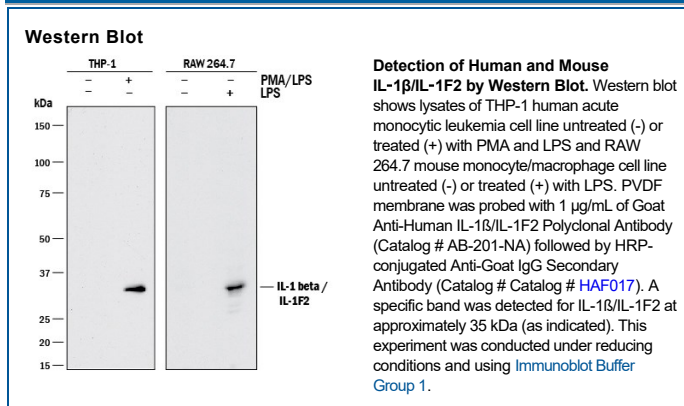
<b>Species Reactivity</b>	Human
<b>Specificity</b>	Detects human IL-1 $\beta$ /IL-1F2 in ELISAs and Western blots. In direct ELISAs, 100% cross-reactivity with recombinant rhesus monkey is observed, and approximately 50% cross-reactivity with recombinant mouse IL-1 $\beta$ , recombinant rat IL-1 $\beta$ , recombinant canine IL-1 $\beta$ , recombinant equine IL-1 $\beta$ , recombinant feline IL-1 $\beta$ , and approximately 20% cross-reactivity with recombinant porcine IL-1 $\beta$ and recombinant cotton rat IL-1 $\beta$ is observed.
<b>Source</b>	Polyclonal Goat IgG
<b>Purification</b>	Protein A or G purified
<b>Immunogen</b>	<i>E. coli</i> -derived recombinant human IL-1 $\beta$ /IL-1F2 Ala117-Ser269 Accession # NP_000567
<b>Endotoxin Level</b>	<0.10 EU per 1 $\mu$ g of the antibody by the LAL method.
<b>Formulation</b>	Lyophilized from a 0.2 $\mu$ m filtered solution in PBS with Trehalose. See Certificate of Analysis for details.

## APPLICATIONS

**Please Note:** Optimal dilutions should be determined by each laboratory for each application. General Protocols are available in the Technical Information section on our website.

	Recommended Concentration	Sample
<b>Western Blot</b>	1 $\mu$ g/mL	See Below
<b>Immunocytochemistry</b>	5-15 $\mu$ g/mL	See Below
<b>Neutralization</b>	Measured by its ability to neutralize IL-1 $\beta$ /IL-1F2-induced proliferation in the D10.G4.1 mouse helper T cell line. Symons, J.A. <i>et al.</i> (1987) in <i>Lymphokines and Interferons, a Practical Approach</i> . Clemens, M.J. <i>et al.</i> (eds): IRL Press. 272. The Neutralization Dose (ND <sub>50</sub> ) is typically 0.05-0.1 $\mu$ g/mL in the presence of 50 pg/mL Recombinant Human IL-1 $\beta$ /IL-1F2.	

## DATA



## PREPARATION AND STORAGE

<b>Reconstitution</b>	Reconstitute at 1 mg/mL in sterile PBS.
<b>Shipping</b>	The product is shipped at ambient temperature. Upon receipt, store it immediately at the temperature recommended below.
<b>Stability &amp; Storage</b>	<b>Use a manual defrost freezer and avoid repeated freeze-thaw cycles.</b> <ul style="list-style-type: none"><li>• 12 months from date of receipt, -20 to -70 °C as supplied.</li><li>• 1 month, 2 to 8 °C under sterile conditions after reconstitution.</li><li>• 6 months, -20 to -70 °C under sterile conditions after reconstitution.</li></ul>

## BACKGROUND

IL-1 is a name that designates two pleiotropic cytokines, IL-1 $\alpha$  (IL-1F1) and IL-1 $\beta$  (IL-1F2, IL1B), which are the products of distinct genes. IL-1 $\alpha$  and IL-1 $\beta$  are structurally related polypeptides that share approximately 21% amino acid (aa) identity in human. Both proteins are produced by a wide variety of cells in response to inflammatory agents, infections, or microbial endotoxins. While IL-1 $\alpha$  and IL-1 $\beta$  are regulated independently, they bind to the same receptor and exert identical biological effects. IL-1 RI binds directly to IL-1 $\alpha$  or IL-1 $\beta$  and then associates with IL-1 R accessory protein (IL-1 R3/IL-1 R AcP) to form a high-affinity receptor complex that is competent for signal transduction. IL-1 RII has high affinity for IL-1 $\beta$  but functions as a decoy receptor and negative regulator of IL-1 $\beta$  activity. IL-1ra functions as a competitive antagonist by preventing IL-1 $\alpha$  and IL-1 $\beta$  from interacting with IL-1 RI. Intracellular cleavage of the IL-1 beta precursor by Caspase-1/ICE is a key step in the inflammatory response. The 17 kDa molecular weight mature human IL-1 $\beta$  shares 96% aa sequence identity with rhesus and 67%-78% with canine, cotton rat, equine, feline, mouse, porcine, and rat IL-1 $\beta$ . IL-1 $\beta$  functions in a central role in immune and inflammatory responses, bone remodeling, fever, carbohydrate metabolism, and GH/IGF-I physiology. IL-1 beta dysregulation is implicated in many pathological conditions including sepsis, rheumatoid arthritis, inflammatory bowel disease, acute and chronic myelogenous leukemia, insulin-dependent diabetes mellitus, atherosclerosis, neuronal injury, and aging-related diseases.

## PRODUCT SPECIFIC NOTICES

This product is covered by one or more of the following U.S. patents: 4,766,069, 5,510,462, 5,681,933, 4,762,914, 5,474,899, 5,789,185, 5,484,887, 5,122,459, 5,001,057, 5,077,219, 5,286,847.