

DESCRIPTION

Source Human embryonic kidney cell, HEK293-derived
Tyr33-Gly177
Accession # Q9H293

N-terminal Sequence Analysis Tyr33

Structure / Form Disulfide-linked homodimer

Predicted Molecular Mass 17 kDa (monomer)

SPECIFICATIONS

SDS-PAGE 20-28 kDa, reducing conditions

Activity Measured by its ability to induce CXCL1/GRO α secretion in HT-29 human colon adenocarcinoma cells.
The ED₅₀ for this effect is 0.25-1.5 ng/mL.

Endotoxin Level <0.10 EU per 1 μ g of the protein by the LAL method.

Purity >95%, by SDS-PAGE with silver staining.

Formulation Lyophilized from a 0.2 μ m filtered solution in HCl with BSA as a carrier protein. See Certificate of Analysis for details.

PREPARATION AND STORAGE

Reconstitution Reconstitute at 100 μ g/mL in 4 mM HCl containing at least 0.1% human or bovine serum albumin.

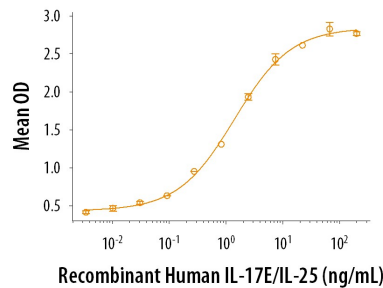
Shipping The product is shipped at ambient temperature. Upon receipt, store it immediately at the temperature recommended below.

Stability & Storage **Use a manual defrost freezer and avoid repeated freeze-thaw cycles.**

- 12 months from date of receipt, -20 to -70 °C as supplied.
- 1 month, 2 to 8 °C under sterile conditions after reconstitution.
- 3 months, -20 to -70 °C under sterile conditions after reconstitution.

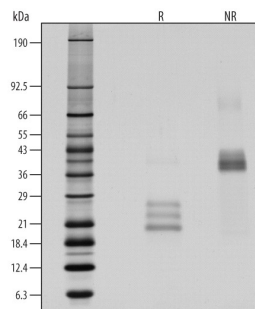
DATA

Bioactivity



IL-17E Induces CXCL1/GRO α Secretion.
Recombinant Human IL-17E/IL-25 (Catalog # 8134-IL) induces CXCL1/GRO α secretion in HT-29 human colon adenocarcinoma cells. The ED₅₀ for this effect is 0.25-1.5 ng/mL.

SDS-PAGE



1 μ g/lane of Recombinant Human IL-17E (Catalog # 8134-IL) was resolved with SDS-PAGE under reducing (R) and non-reducing (NR) conditions and visualized by silver staining, showing R bands at 20-28 kDa and NR bands at 37-43 kDa.

BACKGROUND

The Interleukin-17 (IL-17) family of proteins are immunoregulatory cytokines that share a conserved cysteine-rich region. IL-17E, which is also known as IL-25, promotes Th2-biased immune responses. This is in contrast to other IL-17 family members which promote Th1- and Th17-biased inflammation. IL-25 is an important mediator of allergic reactions and protection against intestinal parasites (1, 2). Mature human IL-25 shares 80% amino acid sequence identity with mouse and rat IL-25 (3, 4). During helminth infections and allergic reactions, IL-25 is locally up-regulated in intestinal and airway epithelial cells, atopic dermatitis skin lesions, and local Th2 cells, eosinophils, and basophils (4-9). It binds to IL-17 RB but also requires IL-17 RA to exert its activity (3, 8, 10). IL-25 acts on a variety of cell types which respond with increased production of Th2 cytokines (e.g. IL-4, IL-5, IL-13) and reduced production of Th1 and Th17 cytokines (e.g. IFN- γ , IL-12, IL-23, IL-17A, IL-17F) (4-6, 8, 9, 11-15). Airway IL-25 can be activated by MMP-7, a protease that is up-regulated in airway epithelium in response to allergen exposure (16). Cleaved IL-25 shows enhanced binding to IL-17 RB and stronger induction of Th2 cytokines (16). The Th2 cytokines, in turn, trigger expansion of Th2 memory cells and anti-inflammatory M2 macrophages, increased eosinophil mobilization and activation, and dendritic cell migration (4, 6, 9, 13). These actions promote protective anti-helminth immune responses (4, 5) as well as allergic inflammation and airway hyperreactivity (11). The IL-25 induced suppression of Th1 and Th17 cytokines limits Th17 cell expansion and disease pathology in autoimmunity and colitis [12, 15]. IL-25 also promotes vascular endothelial cell proliferation and assembly into tubular structures (7). It supports the integrity of the blood-brain barrier and limits CD4⁺ T cell infiltration into the brain (17).

References:

1. Saadoun, D. *et al.* (2011) *Curr. Pharm. Des.* **17**:3781.
2. Iwakura, Y. *et al.* (2011) *Immunity* **34**:149.
3. Lee, J. *et al.* (2001) *J. Biol. Chem.* **276**:1660.
4. Fort, M.M. *et al.* (2001) *Immunity* **15**:985.
5. Zhao, A. *et al.* (2010) *J. Immunol.* **185**:6921.
6. Suzukawa, M. *et al.* (2012) *J. Immunol.* **189**:3641.
7. Corrigan, C.J. *et al.* (2011) *Proc. Natl. Acad. Sci. USA* **108**:1579.
8. Petersen, B.C. *et al.* (2012) *Nat. Med.* **18**:751.
9. Wang, Y.-H. *et al.* (2007) *J. Exp. Med.* **204**:1837.
10. Rickel, E.A. *et al.* (2008) *J. Immunol.* **181**:4299.
11. Hurst, S.D. *et al.* (2002) *J. Immunol.* **169**:443.
12. Kleinschek, M.A. *et al.* (2007) *J. Exp. Med.* **204**:161.
13. Cao, Q. *et al.* (2011) *J. Am. Soc. Nephrol.* **22**:1229.
14. Stock, P. *et al.* (2009) *J. Immunol.* **182**:5116.
15. Caruso, R. *et al.* (2009) *Gastroenterology* **136**:2270.
16. Goswami, S. *et al.* (2009) *Nat. Immunol.* **10**:496.
17. Sonobe, Y. *et al.* (2009) *J. Biol. Chem.* **284**:31834.