

DESCRIPTION

Source *E. coli*-derived
Ile23-Tyr127
Accession # Q9NRJ3

N-terminal Sequence Analysis Ile23

Predicted Molecular Mass 12 kDa

SPECIFICATIONS

Activity Measured by its ability to chemoattract BaF3 mouse pro-B cells transfected with human CCR10. The ED₅₀ for this effect is 0.4-2.0 µg/mL.

Endotoxin Level <0.10 EU per 1 µg of the protein by the LAL method.

Purity >97%, by SDS-PAGE under reducing conditions and visualized by silver stain.

Formulation Lyophilized from a 0.2 µm filtered solution in PBS with BSA as a carrier protein. See Certificate of Analysis for details.

PREPARATION AND STORAGE

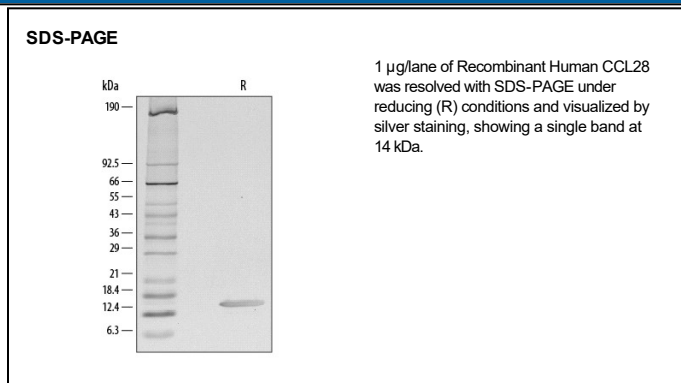
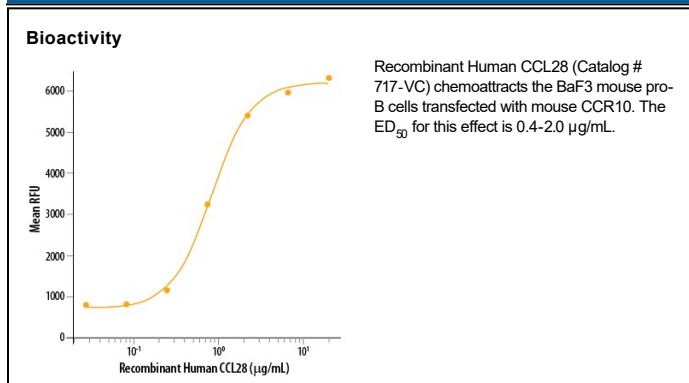
Reconstitution Reconstitute at 25 µg/mL in sterile PBS containing at least 0.1% human or bovine serum albumin.

Shipping The product is shipped at ambient temperature. Upon receipt, store it immediately at the temperature recommended below.

Stability & Storage Use a manual defrost freezer and avoid repeated freeze-thaw cycles.

- 12 months from date of receipt, -20 to -70 °C as supplied.
- 1 month, 2 to 8 °C under sterile conditions after reconstitution.
- 3 months, -20 to -70 °C under sterile conditions after reconstitution.

DATA



BACKGROUND

Human CCL28 (CC chemokine ligand 28) is a novel CC chemokine identified by TBLASTN searches of the Human Genome Systems (HGS) and Genbank dbEst database using a human chemokine consensus sequence. Human CCL28 cDNA encodes a 127 amino acid (aa) residue precursor protein with a putative 22 aa residue signal peptide that is cleaved to produce the 105 aa residue mature protein. Human and mouse CCL28 are highly conserved, sharing 83% aa identity in their mature regions. Among CC chemokines, CCL28 shares the most homology with CCL27/CTACK. The mouse CCL28 gene has been mapped to the distal region of chromosome 13. Human and mouse CCL28 RNA expression was found to be highest in normal and pathologic colon with the protein being expressed by epithelial cells. Human CCL28 RNA was also present in normal and asthmatic lung tissues. The receptor for CCL28 has been identified as the CCR10 (GPR2 orphan receptor) which is also the receptor for CCL27/CTACK.

References:

1. Wang, W. *et al.* (2000) *J. Biol. Chem.* **275**:22313.