

DESCRIPTION

Source Chinese Hamster Ovary cell line, CHO-derived human R-Spondin 1 protein
Ser21-Ala263
Accession # Q2MKA7

N-terminal Sequence Analysis Ser21 & Arg31

Predicted Molecular Mass 25.6 kDa

SPECIFICATIONS

SDS-PAGE 39 kDa, reducing conditions

Activity Measured by its ability to induce Topflash reporter activity in HEK293T human embryonic kidney cells.
The ED₅₀ for this effect is 1.00-10.0 ng/mL in the presence of 5 ng/mL Recombinant Mouse Wnt-3a (Catalog # 1324-WN).

Endotoxin Level <0.10 EU per 1 µg of the protein by the LAL method.

Purity >90%, by SDS-PAGE visualized with Silver Staining and quantitative densitometry by Coomassie® Blue Staining.

Formulation Lyophilized from a 0.2 µm filtered solution in PBS. See Certificate of Analysis for details.

PREPARATION AND STORAGE

Reconstitution Reconstitute at 100 µg/mL in PBS.

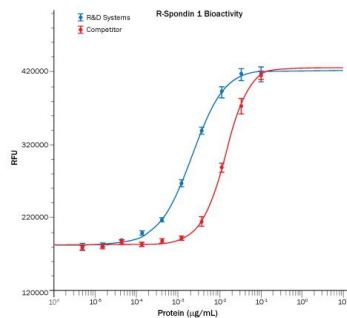
Shipping The product is shipped at ambient temperature. Upon receipt, store it immediately at the temperature recommended below.

Stability & Storage Use a manual defrost freezer and avoid repeated freeze-thaw cycles.

- 12 months from date of receipt, -20 to -70 °C as supplied.
- 1 month, 2 to 8 °C under sterile conditions after reconstitution.
- 3 months, -20 to -70 °C under sterile conditions after reconstitution.

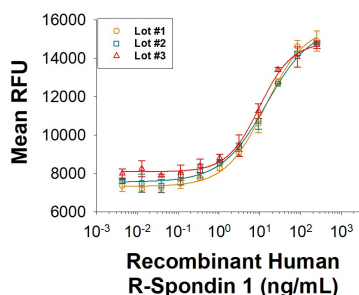
DATA

Bioactivity



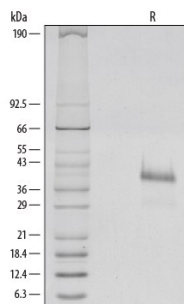
Recombinant Human R-Spondin 1 Protein Bioactivity
 Recombinant Human R-Spondin 1 (Catalog # 4645-RS/CF), in the presence of Recombinant Mouse Wnt-3a (Catalog # 1324-WN/CF); 5 ng/mL, induces activation of beta-catenin in HEK293T cells measured using the Topflash assay (blue). The activity is approximately 7-fold greater than the competitor's R-Spondin 1 (red).

Bioactivity



Recombinant Human R-Spondin 1 Protein, CF Lot-to-Lot Consistency
 The lot-to-lot consistency of Recombinant Human R-Spondin 1 (Catalog # 4645-RS/CF) was assessed by testing the ability of three independent lots of the protein to stimulate activation of beta-Catenin using a TOPflash beta-Catenin/TCF reporter assay in the HEK293T human kidney cell line, in the presence of 5 ng/mL Recombinant Mouse Wnt-3a (Catalog # 1324-WN). Each trace on the graph represents data obtained from Recombinant Human R-Spondin 1 from a different manufacturing run. The ED₅₀ for this effect is 1.00-10.0 ng/mL in the presence of 5 ng/mL Recombinant Mouse Wnt-3a.

SDS-PAGE



Recombinant Human R-Spondin 1 Protein SDS-PAGE
 1 µg/lane of Recombinant Human R-Spondin 1 was resolved with SDS-PAGE and visualized by silver staining, under reducing (R) conditions, showing a single band at 39 kDa.

BACKGROUND

R-Spondin 1 (RSPO1, Roof plate-specific Spondin 1), also known as cysteine-rich and single thrombospondin domain containing protein 3 (Cristin 3), is a 27 kDa secreted protein that shares ~40% amino acid (aa) identity with three other R-Spondin family members (1, 2). All R-Spondins regulate Wnt/ beta-Catenin signaling but have distinct expression patterns (1-3). R-Spondin 1 competes with the Wnt antagonist DKK-1 for binding to the Wnt co-receptors, Kremen and LRP-6, reducing their DKK-1-mediated internalization (4). However, reports are mixed on whether R-Spondin 1 binds LRP-6 directly (4-6). R-Spondin 1 is expressed in early development at the roof plate boundary and is thought to contribute to dorsal neural tube development (3, 7). In humans, rare disruptions of the R-Spondin 1 gene are associated with tendencies for XX sex reversal (phenotypic male) or hermaphroditism, indicating a role for R-Spondin 1 in gender-specific differentiation (7, 8). Mutations in R-Spondin 1 are also linked with palmoplantar keratoderma, abnormal thickening of the skin on the palms of the hands and soles of the feet (7, 8). Postnatally, R-Spondin 1 is expressed by neuroendocrine cells in the intestine, adrenal gland and pancreas, and by epithelia in kidney and prostate (9). Injection of recombinant R-Spondin 1 in mice causes activation of beta-catenin and proliferation of intestinal crypt epithelial cells, and ameliorates experimental colitis (9, 10). Interest in R-Spondin 1 as a cell culture supplement has grown with the expansion of the organoid field. R-Spondin 1 is widely used in organoid cell culture workflows as a vital component that promotes both growth and survival of 3D organoids (11).

Structurally similar to other R-Spondins, R-Spondin 1 contains two adjacent cysteine-rich furin-like domains (aa 34-135) with one potential N-glycosylation site, followed by a thrombospondin (TSP-1) motif (aa 147-207) and a region rich in basic residues (aa 211-263). Only the furin-like domains are needed for beta-catenin stabilization (2, 12). A putative nuclear localization signal at the C-terminus may allow some expression in the nucleus (13). Potential isoforms of 200 and 236 aa have an alternate, shorter N-terminus or are missing aa 146-208, respectively (14). Over aa 21-263, human R-Spondin 1 shares 89%, 87%, 92%, 91%, 91% and 89% aa identity with mouse, rat, horse, dog, goat, and cow RSPO-1, respectively.

References:

1. Chen, J.-Z. *et al.* (2002) *Mol. Biol. Rep.* **29**:287.
2. Kim, K.-A. *et al.* (2006) *Cell Cycle* **5**:23.
3. Nam, J.-S. *et al.* (2007) *Gene Expr. Patterns* **7**:306.
4. Binnerts, M.E. *et al.* (2007) *Proc. Natl. Acad. Sci. USA* **104**:14700.
5. Nam, J.-S. *et al.* (2006) *J. Biol. Chem.* **281**:13247.
6. Wei, Q. *et al.* (2007) *J. Biol. Chem.* **282**:15903.
7. Kamata, T. *et al.* (2004) *Biochim. Biophys. Acta* **1676**:51.
8. Parma, P. *et al.* (2006) *Nat. Genet.* **38**:1304.
9. Kim, K.-A. *et al.* (2005) *Science* **309**:1256.
10. Zhao, J. *et al.* (2007) *Gastroenterology* **132**:1331.
11. Drost and Clevers. (2018) *Nature Reviews Cancer* **18**:407.
12. Kazanskaya, O. *et al.* (2004) *Dev. Cell* **7**:525.
13. Tomaselli, S. *et al.* (2008) *Hum. Mutat.* **29**:220.
14. UniProt # Q2MKA7.