

# Recombinant Human Active ROCK1

## Certificate of Analysis

Catalog Number: 4590-KS

Lot Number: 1475431

### Specifications and Use

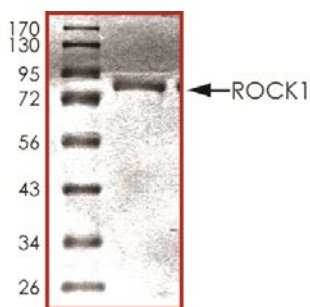
- Source** ♦ Recombinant human ROCK1 (amino acids 17-535) was expressed by baculovirus in Sf9 insect cells using an N-terminal GST tag. The gene accession number is NM\_005406.
- Molecular Mass** ♦ The approximate molecular weight is 85 kDa (see Figure 1 below).
- Purity** ♦ The purity was determined to be > 95% by densitometry (see Figure 1 below).
- Formulation** ♦ Supplied in 50 mM Tris-HCl (pH 7.5), 150 mM NaCl, 0.25 mM DTT, 10 mM glutathione, 0.1 mM EDTA, 0.1 mM PMSF, and 25% glycerol.
- Size** ♦ 10 µg.
- Concentration** ♦ 0.1 µg/µL.
- Activity** ♦ The specific activity of ROCK1 was determined to be 55 nmol/min/mg using a synthetic peptide substrate (see Activity Assay Protocol).
- Storage** ♦ This product is stable at ≤ -70 °C for up to 1 year from the date of receipt. For optimal storage, aliquot into smaller quantities after centrifugation and store at recommended temperature.  
♦ **Avoid repeated freeze-thaw cycles.**

### ROCK1

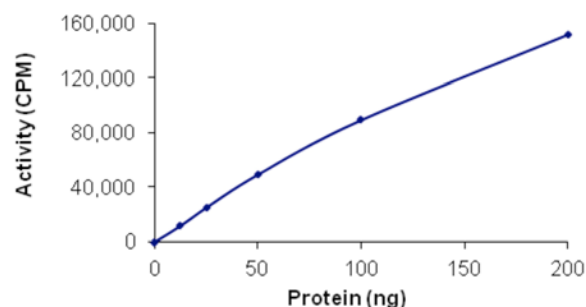
ROCK1 is a ubiquitously expressed serine/threonine kinase that is a downstream target of the small GTPase RhoA. ROCK1 is involved in diverse cellular functions, including smooth muscle contraction, actin cytoskeleton organization, cell adhesion and motility, and gene expression (1). ROCK1 contributes to the development of cardiac fibrosis and induction of fibrogenic cytokines in cardiomyocytes in response to pathological stimuli. ROCK1 knockout mice exhibit reduced perivascular and interstitial fibrosis, which is associated with reduced expression of a variety of extracellular matrix (ECM) proteins and fibrogenic cytokines (2).

### References

1. Zhao, Y.M. *et al.* (2004) *Dev. Biol.* **275**:183.
2. Zhang, C. *et al.* (2006) *FASEB J.* **20**:916.



**Figure 1:** The approximate molecular weight is 85 kDa and the purity is > 95%.



**Figure 2:** The specific activity of this lot of ROCK1 was determined to be 55 nmol/min/mg as per the Activity Assay Protocol (on reverse).

FOR RESEARCH USE ONLY. NOT FOR USE IN HUMANS.

**R&D Systems, Inc.**  
**1-800-343-7475**

## Activity Assay Protocol

### Solutions Required

- **Active Kinase** - Active ROCK1 (0.1 µg/µL) diluted with Kinase Dilution Buffer. **Note:** These are suggested working dilutions. Optimal dilutions should be determined by each laboratory for each application.
- **Kinase Assay Buffer, pH 7.2** - 25 mM MOPS, 12.5 mM β-glycerolphosphate, 25 mM MgCl<sub>2</sub>, 5 mM EGTA, 2 mM EDTA. Add 0.25 mM DTT to the Kinase Assay Buffer prior to use.
- **Kinase Dilution Buffer, pH 7.2** - Kinase Assay Buffer diluted 5-fold with a 50 ng/µL BSA solution.
- **10 mM ATP Stock Solution** - Prepare the ATP Stock Solution by dissolving 55 mg of ATP in 10 mL of Kinase Assay Buffer. Store 200 µL aliquots at ≤ -20 °C.
- **[<sup>33</sup>P]-ATP Assay Cocktail** - Prepare 250 µM [<sup>33</sup>P]-ATP Assay Cocktail in a designated radioactive work area by combining 150 µL of 10 mM ATP Stock Solution, 100 µL of [<sup>33</sup>P]-ATP (1 mCi/100 µL), and 5.75 mL of Kinase Assay Buffer. Store 1 mL aliquots at ≤ -20 °C.
- **Substrate** - S6K synthetic peptide substrate (KRRRLASLR) diluted in distilled or deionized water to a final concentration of 1 mg/mL.

### Assay Procedure

1. Thaw the [<sup>33</sup>P]-ATP Assay Cocktail in a shielded container in a designated radioactive work area.
2. Thaw the Active ROCK1, Kinase Assay Buffer, Substrate, and Kinase Dilution Buffer on ice.
3. In a pre-cooled microfuge tube, add the following reaction components bringing the initial reaction volume up to 20 µL.

Reaction Component	Amount
Diluted Active ROCK1	10 µL
Substrate (1 mg/mL; on ice)	5 µL
Distilled or deionized water (on ice)	5 µL

4. Set up the blank control as outlined in step 3, excluding the addition of the substrate. Replace the substrate with an equal volume of distilled or deionized water.
5. Initiate the reaction with the addition of 5 µL [<sup>33</sup>P]-ATP Assay Cocktail, bringing the final volume up to 25 µL. Incubate the mixture in a water bath at 30 °C for 15 minutes.
6. After the 15 minute incubation, terminate the reaction by spotting 20 µL of the reaction mixture onto individual pre-cut strips of phosphocellulose P81 paper.
7. Air dry the pre-cut P81 strip and sequentially wash in a 1% phosphoric acid solution (add 10 mL of phosphoric acid to 990 mL of distilled or deionized water) with constant gentle stirring. It is recommended that the strips be washed a total of three times for approximately 10 minutes each.
8. Count the radioactivity on the P81 paper in the presence of scintillation fluid in a scintillation counter.
9. Determine the corrected cpm by subtracting the blank control value (see step 4) for each sample and calculate the kinase specific activity as outlined below.

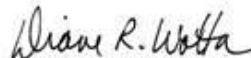
### Calculation of [<sup>33</sup>P]-ATP Specific Activity (SA) (cpm/pmol)

Specific Activity (SA) = cpm for 5 µL [<sup>33</sup>P]-ATP/pmole of ATP (in 5 µL of a 250 µM ATP stock solution, *i.e.* 1250 pmoles)

### Calculation of Kinase Specific Activity (SA) (pmol/minutes/µg or nmol/minutes/mg)

Corrected cpm from reaction / [(SA of <sup>33</sup>P-ATP in cpm/pmol) x (Reaction time in minutes) x (Enzyme amount in µg or mg)] x [(Reaction volume) / (Spot Volume)]

Diane Wotta



Quality & Regulatory Affairs