

**DESCRIPTION**

**Source** *E. coli*-derived mouse SCF/c-kit Ligand protein  
Lys26-Ala189, with an N-terminal Met  
Accession # Q78ED8

**N-terminal Sequence Analysis** Met

**Predicted Molecular Mass** 18.6 kDa

**SPECIFICATIONS**

**Activity** Measured in a cell proliferation assay using TF-1 human erythroleukemic cells. Kitamura, T. *et al.* (1989) J. Cell Physiol. **140**:323. The ED<sub>50</sub> for this effect is 2.5-10 ng/mL.

**Endotoxin Level** <0.10 EU per 1 µg of the protein by the LAL method.

**Purity** >97%, by SDS-PAGE under reducing conditions and visualized by silver stain.

**Formulation** Lyophilized from a 0.2 µm filtered solution in PBS. See Certificate of Analysis for details.

**PREPARATION AND STORAGE**

**Reconstitution** Reconstitute at 100 µg/mL in sterile PBS.

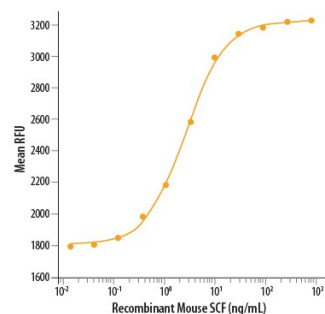
**Shipping** The product is shipped at ambient temperature. Upon receipt, store it immediately at the temperature recommended below.

**Stability & Storage** Use a manual defrost freezer and avoid repeated freeze-thaw cycles.

- 12 months from date of receipt, -20 to -70 °C as supplied.
- 1 month, 2 to 8 °C under sterile conditions after reconstitution.
- 3 months, -20 to -70 °C under sterile conditions after reconstitution.

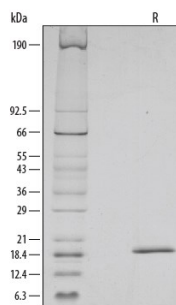
**DATA**

**Bioactivity**



**Recombinant Mouse SCF Protein Bioactivity** Recombinant Mouse SCF/c-kit Ligand (Catalog # 455-MC/CF) stimulates cell proliferation of the TF-1 human erythroleukemic cell line. The ED<sub>50</sub> for this effect is 2.5-10 ng/mL.

**SDS-PAGE**



**Recombinant Mouse SCF Protein SDS-PAGE** 1 µg/lane of Recombinant Mouse SCF/c-kit was resolved with SDS-PAGE under reducing (R) conditions and visualized by silver staining, showing a single band at 19 kDa.

**BACKGROUND**

Stem cell factor (SCF), also known as c-kit ligand (KL), mast cell growth factor (MGF), and steel factor (SLF), is a widely expressed 28 - 40 kDa type I transmembrane glycoprotein (1). It promotes the survival, differentiation, and mobilization of multiple cell types including myeloid, erythroid, megakaryocytic, lymphoid, germ cell, and melanocyte progenitors (1 - 7). SCF is a primary growth and activation factor for mast cells and eosinophils (8). Mature mouse SCF consists of a 189 amino acid (aa) extracellular domain (ECD), a 23 aa transmembrane segment, and a 36 aa cytoplasmic tail (9). The ECD shows both N-linked and O-linked glycosylation (10). Proteolytic cleavage at two alternate sites in the extracellular juxtamembrane region releases a 25 kDa soluble molecule which is comparable to the only form produced by Steel-dickie mutant mice (11, 12). An alternately spliced isoform of mouse SCF lacks 28 aa that encompasses the primary proteolytic recognition site (13). Within the ECD of the short isoform (corresponding to this recombinant protein), mouse SCF shares 93% aa sequence identity with rat SCF and 72% - 75% with canine, feline, and human SCF. Rat SCF is active on mouse and human cells, but human SCF is only weakly active on mouse cells (14). Noncovalent dimers of transmembrane or soluble SCF interact with the receptor tyrosine kinase SCF R/c-kit to trigger receptor dimerization and signaling (15). SCF assists in the recovery of cardiac function following myocardial infarction by increasing the number of cardiomyocytes and vascular channels (16).

**References:**

1. Ashman, L.K. (1999) *Int. J. Biochem. Cell Biol.* **31**:1037.
2. Sette, C. *et al.* (2000) *Int. J. Dev. Biol.* **44**:599.
3. Yoshida, H. *et al.* (2001) *J. Invest. Dermatol. Symp. Proc.* **6**:1.
4. Erlandsson, A. *et al.* (2004) *Exp. Cell Res.* **301**:201.
5. Kapur, R. *et al.* (2002) *Blood* **100**:1287.
6. Wang, C.-H. *et al.* (2007) *Arterioscler. Thromb. Vasc. Biol.* **27**:540.
7. Bashamboo, A. *et al.* (2006) *J. Cell Sci.* **119**:3039.
8. Reber, L. *et al.* (2006) *Eur. J. Pharmacol.* **533**:327.
9. Huang, E. *et al.* (1990) *Cell* **63**:225.
10. Arakawa, T. *et al.* (1991) *J. Biol. Chem.* **266**:18942.
11. Majumdar, M.K. *et al.* (1994) *J. Biol. Chem.* **269**:1237.
12. Brannan, C.I. *et al.* (1991) *Proc. Natl. Acad. Sci.* **88**:4671.
13. Flanagan, J.G. *et al.* (1991) *Cell* **64**:1025.
14. Martin, F.H. *et al.*, 1990, *Cell* **63**:203.
15. Lemmon, M.A. *et al.* (1997) *J. Biol. Chem.* **272**:6311.
16. Kanellakis, P. *et al.* (2006) *Cardiovasc. Res.* **70**:117.