

DESCRIPTION

Source *E. coli*-derived
Glu26-Ala189, with an N-terminal Met
Accession # P21583.1

N-terminal Sequence Analysis Met

Predicted Molecular Mass 18.6 kDa

SPECIFICATIONS

Activity Measured in a cell proliferation assay using TF-1 human erythroleukemic cells. Kitamura, T. *et al.* (1989) J. Cell Physiol. **140**:323. The ED₅₀ for this effect is typically 1-5 ng/mL. The specific activity of Recombinant Human SCF is approximately 564 IU/μg, which is calibrated against recombinant human SCF WHO International Standard (NIBSC code: 91/682).

Endotoxin Level <1.0 EU per 1 μg of the protein by the LAL method.

Purity >97%, by SDS-PAGE visualized with Silver Staining and quantitative densitometry by Coomassie® Blue Staining.

Formulation Lyophilized from a 0.2 μm filtered solution in PBS with BSA as a carrier protein. See Certificate of Analysis for details.

PREPARATION AND STORAGE

Reconstitution Reconstitute at 100-200 μg/mL in sterile PBS containing at least 0.1% human or bovine serum albumin.

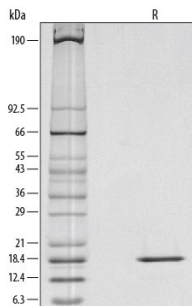
Shipping The product is shipped at ambient temperature. Upon receipt, store it immediately at the temperature recommended below.

Stability & Storage Use a manual defrost freezer and avoid repeated freeze-thaw cycles.

- 12 months from date of receipt, -20 to -70 °C as supplied.
- 1 month, 2 to 8 °C under sterile conditions after reconstitution.
- 3 months, -20 to -70 °C under sterile conditions after reconstitution.

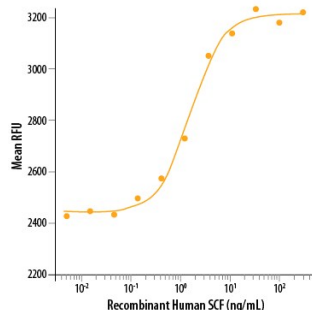
DATA

SDS-PAGE



1 μg/lane of Recombinant Human SCF/c-kit Ligand was resolved with SDS-PAGE under reducing (R) conditions and visualized by silver staining, showing a single band at 19 kDa.

Bioactivity



Recombinant Human SCF/c-kit Ligand (Catalog # 255-SC) stimulates cell proliferation of the TF-1 human erythroleukemic cell line. The ED₅₀ for this effect is typically 1-5 ng/mL.

BACKGROUND

Stem cell factor (SCF), also known as c-kit ligand (KL), mast cell growth factor (MGF), and steel factor (SLF), is a widely expressed 28-40 kDa type I transmembrane glycoprotein (1). It promotes the survival, differentiation, and mobilization of multiple cell types including myeloid, erythroid, megakaryocytic, lymphoid, germ cell, and melanocyte progenitors (1-7). SCF is a primary growth and activation factor for mast cells and eosinophils (8). Mature human SCF consists of a 189 amino acid (aa) extracellular domain (ECD), a 23 aa transmembrane segment, and a 36 aa cytoplasmic tail (9). The ECD shows both N-linked and O-linked glycosylation (10). Proteolytic cleavage at two alternate sites in the extracellular juxtamembrane region releases a 25 kDa soluble molecule which is comparable to the only form produced by Steel-dickie mutant mice (11, 12). An alternately spliced isoform of human SCF lacks 28 aa that encompasses the primary proteolytic recognition site (13). Within the ECD of the long isoform (corresponding to this recombinant protein), human SCF shares 79%-87% aa sequence identity with canine, feline, mouse, and rat SCF. Rat SCF is active on mouse and human cells, but human SCF is only weakly active on mouse cells (9). Noncovalent dimers of transmembrane or soluble SCF interact with the receptor tyrosine kinase SCF R/c-kit to trigger receptor dimerization and signaling (14). SCF assists in the recovery of cardiac function following myocardial infarction by increasing the number of cardiomyocytes and vascular channels (15).

References:

1. Ashman, L.K. (1999) *Int. J. Biochem. Cell Biol.* **31**:1037.
2. Sette, C. *et al.* (2000) *Int. J. Dev. Biol.* **44**:599.
3. Yoshida, H. *et al.* (2001) *J. Invest. Dermatol. Symp. Proc.* **6**:1.
4. Erlandsson, A. *et al.* (2004) *Exp. Cell Res.* **301**:201.
5. Kapur, R. *et al.* (2002) *Blood* **100**:1287.
6. Wang, C.-H. *et al.* (2007) *Arterioscler. Thromb. Vasc. Biol.* **27**:540.
7. Bashamboo, A. *et al.* (2006) *J. Cell Sci.* **119**:3039.
8. Reber, L. *et al.* (2006) *Eur. J. Pharmacol.* **533**:327.
9. Martin, F.H. *et al.* (1990) *Cell* **63**:203.
10. Arakawa, T. *et al.* (1991) *J. Biol. Chem.* **266**:18942.
11. Majumdar, M.K. *et al.* (1994) *J. Biol. Chem.* **269**:1237.
12. Brannan, C.I. *et al.* (1991) *Proc. Natl. Acad. Sci.* **88**:4671.
13. Anderson, D.M. *et al.* (1991) *Cell Growth Differ.* **2**:373.
14. Lemmon, M.A. *et al.* (1997) *J. Biol. Chem.* **272**:6311.
15. Kanellakis, P. *et al.* (2006) *Cardiovasc. Res.* **70**:117.