

DESCRIPTION

Source	Human embryonic kidney cell, HEK293-derived human IL-23 protein		
	Human IL-12p40 (Ile23-Ser328) Accession # P29460.1	GSGSSRGGSGSGSGGGGSKL	Human IL-23p19 (Arg20-Pro189) Accession # AAG37232.1
	N-terminus		C-terminus
N-terminal Sequence Analysis	Ile23		
Predicted Molecular Mass	55 kDa		

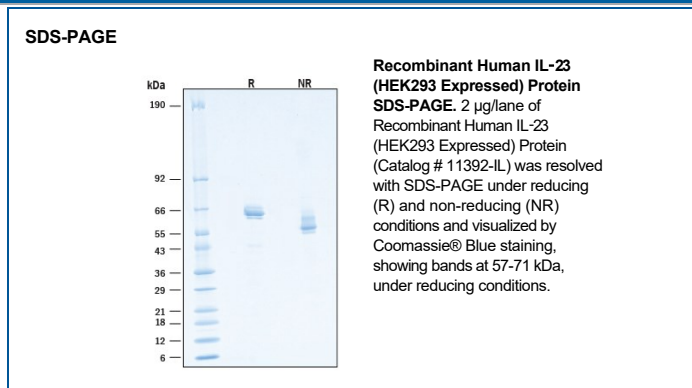
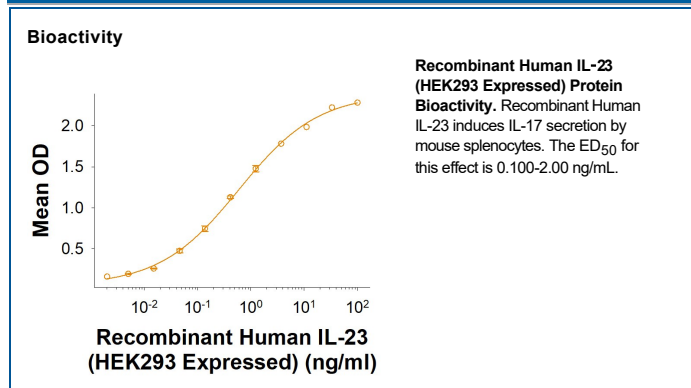
SPECIFICATIONS

SDS-PAGE	57-71 kDa, under reducing conditions.
Activity	Measured by its ability to induce IL-17 secretion by mouse splenocytes. Aggarwal, S. <i>et al.</i> (2003) J. Biol. Chem. 278 :1910. The ED ₅₀ for this effect is 0.100-2.00 ng/mL.
Endotoxin Level	<0.10 EU per 1 µg of the protein by the LAL method.
Purity	>95%, by SDS-PAGE visualized with Silver Staining and quantitative densitometry by Coomassie® Blue Staining.
Formulation	Lyophilized from a 0.2 µm filtered solution in PBS with Trehalose. See Certificate of Analysis for details.

PREPARATION AND STORAGE

Reconstitution	Reconstitute 10 µg size at 100 µg/mL in PBS. Reconstitute all the other size at 500 µg/mL in PBS.
Shipping	The product is shipped at ambient temperature. Upon receipt, store it immediately at the temperature recommended below.
Stability & Storage	<p>Use a manual defrost freezer and avoid repeated freeze-thaw cycles.</p> <ul style="list-style-type: none"> • 12 months from date of receipt, -20 to -70 °C as supplied. • 1 month, 2 to 8 °C under sterile conditions after reconstitution. • 3 months, -20 to -70 °C under sterile conditions after reconstitution.

DATA



BACKGROUND

Interleukin 23 (IL-23) is a heterodimeric cytokine composed of two disulfide-linked subunits, a p19 subunit that is unique to IL-23, and a p40 subunit that is shared with IL-12 (1-5). The p19 subunit has homology to the p35 subunit of IL-12, as well as to other single chain cytokines such as IL-6 and IL-11. The p40 subunit is homologous to the extracellular domains of the hematopoietic cytokine receptors. Human p19 cDNA encodes a 189 amino acid residue (aa) precursor protein with a putative 19 aa signal peptide and 170 aa mature protein. Human and mouse p19 share 70% aa sequence identity. Although p19 is expressed by activated macrophages, dendritic cells, T cells, and endothelial cells, only activated macrophages and dendritic cells express p40 concurrently to produce IL-23. The functional IL-23 receptor complex consists of two receptor subunits, the IL-12 receptor beta 1 subunit (IL-12 R β 1) and the IL-23-specific receptor subunit (IL-23 R). IL-23 has biological activities that are similar to, but distinct from IL-12. Both IL-12 and IL-23 induce proliferation and IFN- γ production by human T cells. While IL-12 acts on both naïve and memory human T cells, the effects of IL-23 is restricted to memory T cells. In mouse, IL-23 but not IL-12, has also been shown to induce memory T cells to secrete IL-17, a potent proinflammatory cytokine. IL-12 and IL-23 can induce IL-12 production from mouse splenic DC of both the CD8⁻ and CD8⁺ subtypes, however only IL-23 can act directly on CD8⁺ DC to mediate immunogenic presentation of poorly immunogenic tumor/self peptide.

References:

1. Oppmann, B. *et al.* (2000) *Immunity* **13**:715.
2. Lankford, C.S. and D.M. Frucht (2003) *J. Leukoc. Biol.* **73**:49.
3. Parham, C. *et al.* (2002) *J. Immunol.* **168**:5699.
4. Belladonna, M.L. *et al.* (2002) *J. Immunol.* **168**:5448.
5. Aggarwal, S. *et al.* (2003) *J. Biol. Chem.* **278**:1910.