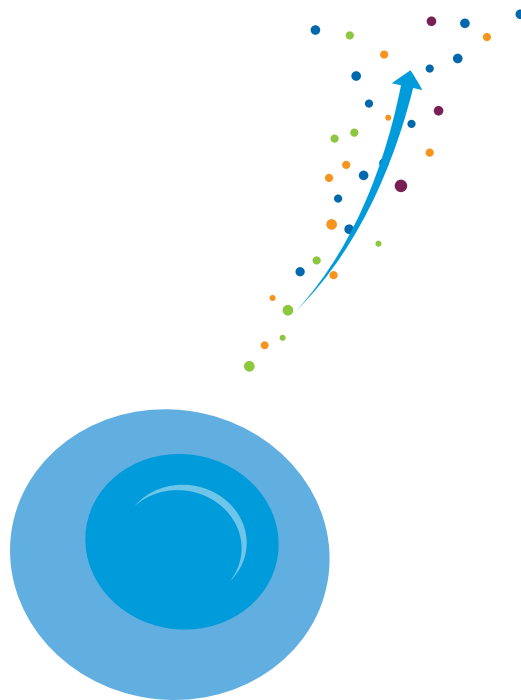
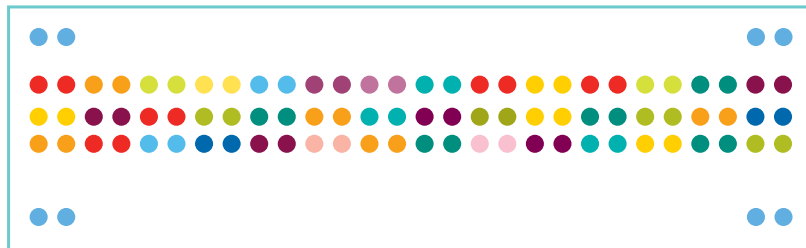


biotechne®

# Proteome Profiler™ Antibody Arrays



# Table of Contents

## When You Need a Simple Sample Screening Solution

Simple Technology that doesn't need Specialized Equipment .....	3
Superior Performance & Conscientious Design.....	3

## Simple and Powerful Sample Analysis

Cost-Effective Analyte Profiling.....	4
Choose the Detection Method that Best Fits Your Needs.....	4
Multiple Analyte Results in only 5.5 Hours.....	5

## Kits Available

Human .....	6-9
Mouse .....	10
Rat.....	11

## Biomarker Testing Service..... 12

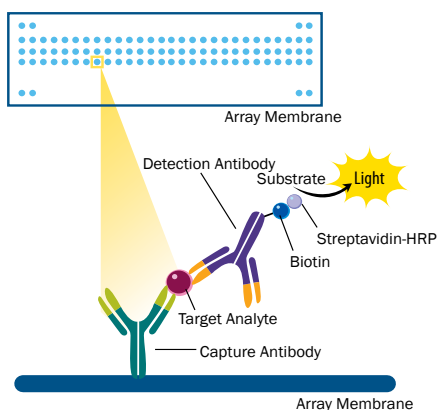
# When You Need a Simple Sample Screening Solution

If you need to investigate multiple analytes, traditional complex sample screening methods, such as Western blot and immunoprecipitation can be expensive in time and money.

Proteome Profiler Antibody Arrays offer quick and inexpensive analysis of multiple analytes in a simple assay. Using a simple two site sandwich assay principle, it allows investigation of up to 119 analytes in a single sample.

With 30 different arrays available for use with multiple validated sample types, there is always an Array that can help accelerate your research.

## Simple Technology that doesn't need Specialized Equipment



If your lab is set up for Western blotting, then you already have all the equipment needed to use our antibody arrays.

Samples are simply incubated with membranes spotted with specific capture antibodies. Captured analyte is detected using a cocktail of biotinylated antibodies and positive spots are visualized using an appropriate detection system.

## Superior Performance & Conscientious Design



Spotted in duplicate on nitrocellulose membrane, you are guaranteed consistent analyte signal detection from our validated antibodies in every experiment you perform. All array antibody pairs are optimized to provide the most accurate and reliable data.



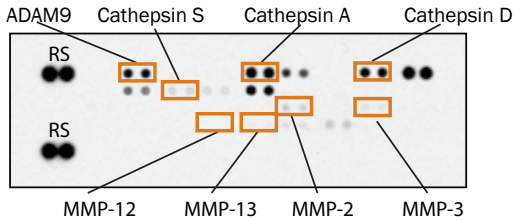
Human Cytokine Array Panel A (Cat# ARY005B) PBMCs untreated (top) or treated with 10 µg/mL PHA for 5 days (bottom). 500 µL of cell culture supernate was run on each array. A 5 minute exposure to film is shown

# Simple and Powerful Sample Analysis

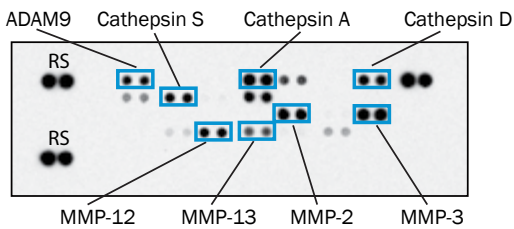
## Cost-Effective Analyte Profiling

Quickly identify the changes of multiple analytes in your samples using Proteome Profiler Arrays. Move your research forward quickly by easily profiling analyte levels and identification of trends between and within samples – all from a single assay.

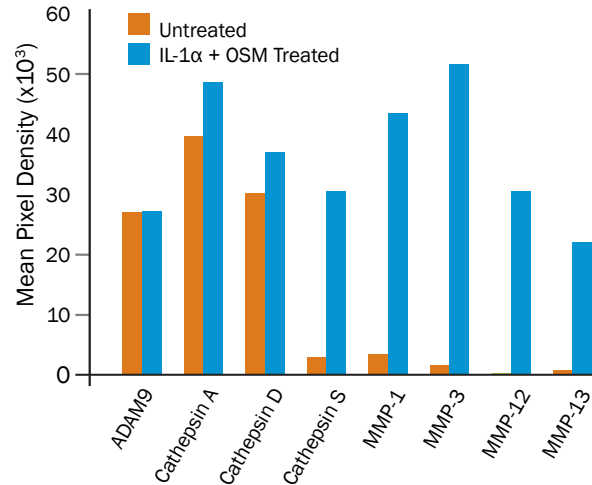
A. Untreated



B. IL-1 $\alpha$  + OSM Treated



C. Untreated vs IL-1 $\alpha$  + OSM Treated

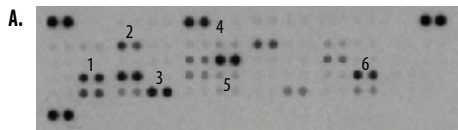


Simultaneous Detection of Multiple Proteases Following Treatment with IL-1 $\alpha$  and Oncostatin M (OSM) The Proteome Profiler Human Protease Antibody Array (Catalog # ARY021B) was used to simultaneously assess protease levels in human chondrosarcoma cell lysates. Cells were either untreated (A) or treated (B) with Recombinant Human IL-1 $\alpha$  (Catalog # 200-LA) and Recombinant Human OSM (Catalog # 295-OM). Chemiluminescence was detected using x-ray film and histogram profiles (C) for select analytes were generated by quantifying the mean spot pixel densities using standard imaging software.

## Choose the Detection Method that Best Fits Your Needs

Results can be visualized on all arrays using supplied optimised chemiluminescent substrates. To give you choice, LI-COR near-infrared (NIR) fluorescent detection can also be used on select arrays. For protocol information go to this link: [rndsystems.com/protocols](https://rndsystems.com/protocols).

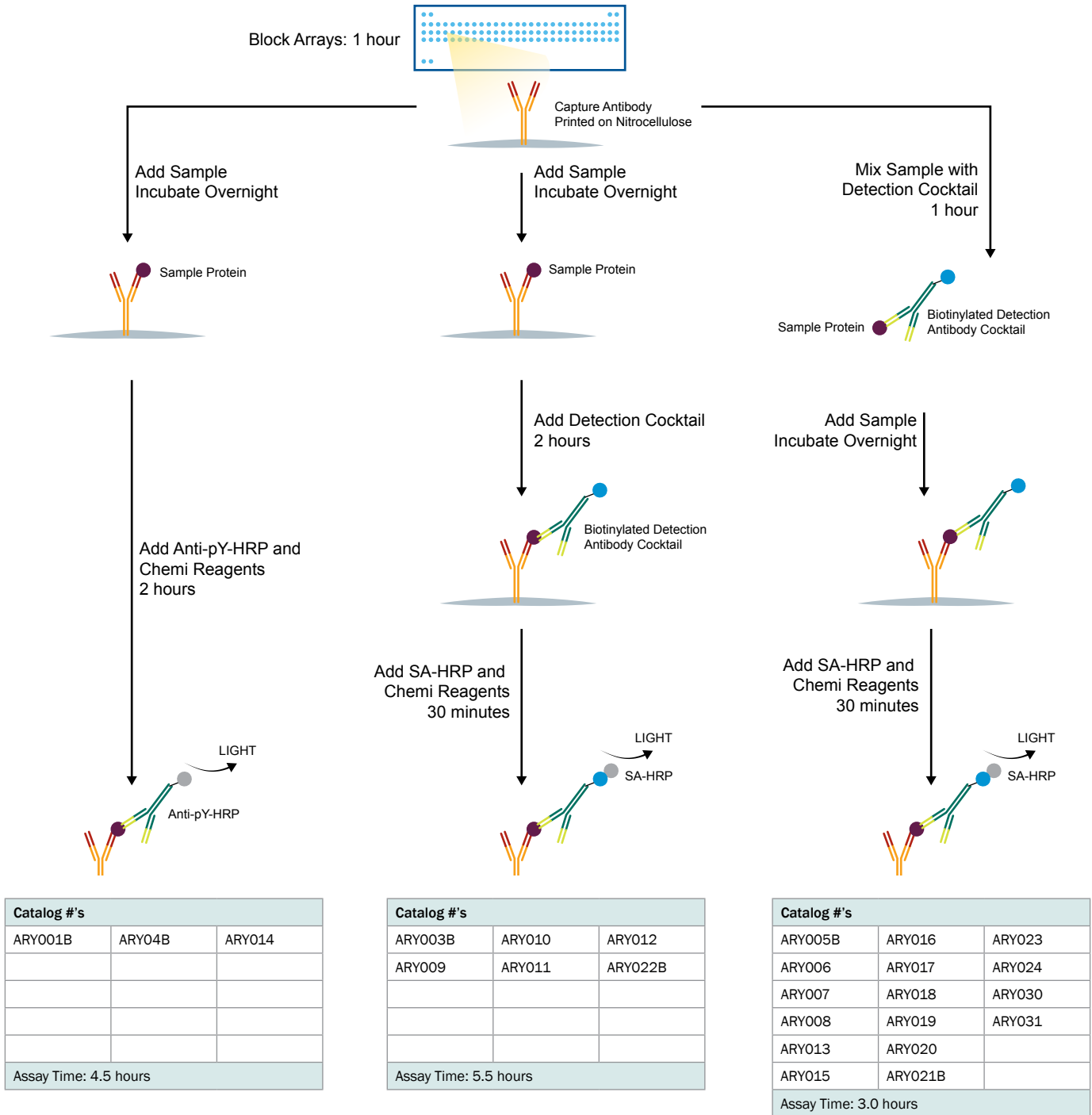
Both chemiluminescence and fluorescence based Proteome Profiler™ Antibody Array Kits can be quickly and accurately analyzed by FluorChem™ systems with AlphaView software. For more information: [rndsystems.com/fluorchemdata](https://rndsystems.com/fluorchemdata)



A chemiluminescence image on X-ray film of a Proteome Profiler Human Angiogenesis Array (Catalog # ARY007) (A) is compared to an image where IRDye 800CW Streptavidin (LI-COR Catalog # 926-32230) was used in place of Streptavidin-HRP (B). LI-COR software was used to perform image analysis for select analytes.

# Multiple Analyte Results in only 5.5 Hours

To help you make the most of your time and resources, all Array protocols are streamlined to make sure you can get results quickly and simply.



# Kits Available

## Human

Human Adipokine Array Kit	
Catalog # ARY024	4 Tests
Contains 4 membranes – each spotted in duplicate with 58 different obesity-related antibodies	
Adiponectin, Angiopoietin-1, Angiopoietin-2, Angiopoietin-like 2, Angiopoietin-like 3, BAFF/BLYS, BMP-4, Cathepsin D, Cathepsin L, Cathepsin S, CCL2/MCP-1, CCL5/RANTES, Chemerin, Complement Factor D, C-Reactive Protein, CXCL8/IL-8, DPPIV/CD26, Endocan, EN-RAGE, Fetuin B, FGF basic, FGF-19, Fibrinogen, Growth Hormone, HGF, ICAM-1, IGFBP-2, IGFBP-3, IGFBP-4, IGFBP-6, IGFBP-rp1/IGFBP-7, IL-1 $\beta$ , IL-6, IL-10, IL-11, LAP (TGF- $\beta$ 1), Leptin, LIF, Lipocalin-2/NGAL, M-CSF, MIF, Myeloperoxidase, Nidogen-1/Entactin, Oncostatin M, Pappalysin-1/PAPP-A, PBEF/Visfatin, PCSK9, Pentraxin-3, Pref-1/DLK-1/FA1, RAGE, Resistin, Serpin A12, Serpin A8/AGT, Serpin E1/PAI-1, TIMP-1, TIMP-3, TNF- $\alpha$ , VEGF	
Validated Sample Type	Suggested Sample Size
Cell Culture Supernates	200–500 $\mu$ L
Cell Lysates	100–200 $\mu$ g
Serum	50–200 $\mu$ L
Plasma	50–200 $\mu$ L
Human Milk	50–200 $\mu$ L
Urine	50–200 $\mu$ L
Saliva	50–200 $\mu$ L

Human Angiogenesis Array Kit	
Catalog # ARY007	4 Tests
Contains 4 membranes – each spotted in duplicate with 55 different angiogenesis-related antibodies	
Activin A, ADAMTS1, Angiogenin, Angiopoietin-1, Angiopoietin-2, Angiostatin/Plasminogen, Amphiregulin, Artemin, CCL2/MCP-1, CCL3/MIP-1 $\alpha$ , Coagulation Factor III/TF, CXCL4/PF4, CXCL8/IL-8, CXCL16, DPPIV, EGF, EG-VEGF, Endoglin, Endostatin/Collagen XVIII, Endothelin-1, FGF acidic, FGF basic, FGF-4, FGF-7, GDNF, GM-CSF, HB-EGF, HGF, IGFBP-1, IGFBP-2, IGFBP-3, IL-1 $\beta$ , LAP (TGF- $\beta$ 1), Leptin, MMP-8, MMP-9, NRG1- $\beta$ 1, Pentraxin 3, PD-ECGF, PDGF-AA, PDGF-AB/BB, Persephin, PIGF, Prolactin, Serpin B5, Serpin E1/PAI-1, Serpin F1/PEDF, TIMP-1, TIMP-4, Thrombospondin-1, Thrombospondin-2, uPA, Vasohibin, VEGF, VEGF-C	
Validated Sample Type	Suggested Sample Size
Cell Culture Supernates	500 $\mu$ L (up to 1 mL)
Cell Lysates	200 $\mu$ g
Serum	100 $\mu$ L
Tissue Lysates	200 $\mu$ g
Plasma (EDTA/Heparin)	100 $\mu$ L
Saliva	100 $\mu$ L

Human Apoptosis Array Kit	
Catalog # ARY009	4 Tests
Contains 4 membranes – each spotted in duplicate with 35 different apoptosis-related antibodies	
Bad, Bax, Bcl-2, Bcl-x, Pro-Caspase-3, Cleaved Caspase-3, Catalase, Claspin, Clusterin, Cytochrome c, FADD, Fas/TNFRSF6, HIF-1 $\alpha$ , HO-1/HMOX1/HSP32, HO-2/HMOX2, HSP27, HSP60, HSP70, HTRA2/Omi, cIAP-1, cIAP-2, Livin, p21/CIP1, p27/Kip1, PON2, Phospho-p53 (S15), Phospho-p53 (S46), Phospho-p53 (S392), Phospho-Rad17 (S635), SMAC/Diablo, Survivin, TNF RI/TNFRSF1A, TRAIL R1/DR4, TRAIL R2/DR5, XIAP	
Validated Sample Type	Suggested Sample Size
Cell Lysates	200–500 $\mu$ g

Human Cell Stress Array Kit	
Catalog # ARY018	4 Tests
Contains 4 membranes – each spotted in duplicate with 26 different cell stress-related antibodies	
ADAMTS1, Bcl-2, Carbonic Anhydrase IX, Cited-2, COX-2, Cytochrome c, Dkk-4, FABP1/L-FABP, HIF-1 $\alpha$ , HIF-2 $\alpha$ , Phospho-HSP27 (S78/S82), HSP60, HSP70, IDO, Phospho-JNK pan (T183/Y185), NF $\kappa$ B1, p21/CIP, p27/KIP, Phospho-p38 $\alpha$ (T180/Y182), Phospho-p53 (S46), PON1, PON2, PON3, Thioredoxin-1, SIRT2, SOD2	
Validated Sample Type	Suggested Sample Size
Cell Lysates	100–300 $\mu$ g
Tissue Lysates	100–300 $\mu$ g

Human Chemokine Array Kit	
Catalog # ARY017	4 Tests
Contains 4 membranes – each spotted in duplicate with 31 different chemokine antibodies	
CCL1/I-309, CCL2/MCP-1, CCL3/CCL4 (MIP-1 $\alpha$ /MIP-1 $\beta$ ), CCL5/RANTES, CCL7/MCP-3, CCL14/HCC-1/HCC-3, CCL15/MIP-1 $\delta$ /LKN-1, CCL17/TARC, CCL18/PARC, CCL19/MIP-3 $\beta$ , CCL20/MIP-3 $\alpha$ , CCL21/6CKine, CCL22/MDC, CCL26/Eotaxin-3, CCL28, Chemerin, CX3CL1/Fractalkine, CXCL1/GR $\alpha$ , CXCL4/PF4, CXCL5/ENA-78, CXCL7/NAP-2, CXCL8/IL-8, CXCL9/MIG, CXCL10/IP-10, CXCL11/I-TAC, CXCL12/SDF-1, CXCL16, CXCL17/VCC-1, IL-16, Midkine, XCL1/Lymphotactin	
Validated Sample Type	Suggested Sample Size
Cell Culture Supernates	200–500 $\mu$ L
Cell Lysates	100–200 $\mu$ g
Serum	50–200 $\mu$ L
Tissue Lysates	100–200 $\mu$ g
Plasma (EDTA/Heparin)	50–200 $\mu$ L
Saliva	250 $\mu$ L
Urine	500 $\mu$ L

# Human

Human Cytokine Array Kit, Panel A	
Catalog # ARY005B	4 Tests
Contains 4 membranes – each spotted in duplicate with 36 different cytokine antibodies	
C5a, CCL1/I-309, CCL2/MCP-1, CCL3/MIP-1 $\alpha$ , CCL4/MIP-1 $\beta$ , CCL5/RANTES, CD40 Ligand, CXCL1/GRO $\alpha$ , CXCL8/IL-8, CXCL10/IP-10, CXCL11/I-TAC, CXCL12/SDF-1, G-CSF, GM-CSF, ICAM-1, IFN- $\gamma$ , IL-1 $\alpha$ , IL-1 $\beta$ , IL-1ra, IL-2, IL-4, IL-5, IL-6, IL-10, IL-12 p70, IL-13, IL-16, IL-17, IL-17E, IL-23, IL-27, IL-32 $\alpha$ , MIF, Serpin E1/PAI-1, TNF- $\alpha$ , TREM-1	
Validated Sample Type	Suggested Sample Size
Cell Culture Supernates	200–700 $\mu$ L
Cell Lysates	100–300 $\mu$ g
Serum	50–200 $\mu$ L
Tissue Lysates	100–300 $\mu$ g
Plasma (EDTA/Heparin)	50–200 $\mu$ L

Human XL Cytokine Array Kit	
Catalog # ARY022B	4 Tests
Contains 4 membranes – each spotted in duplicate with 105 different cytokine antibodies	
Adiponectin/Acrp30, Angiogenin, Angiopoietin-1, Angiopoietin-2, Apolipoprotein A-1/ApoA1, BAFF/BLyS/TNFSF13B, BDNF, CD14, CD30, CD31/PECAM-1, CD40 Ligand, Chitinase 3-like 1, Complement Component C5/C5a, Complement Factor D, C-Reactive Protein/CRP, Cripto-1, Cystatin C, Dkk-1, DPPIV/CD26, EGF, CXCL5/ENA-78, Endoglin/CD105, EMMPRIN, Fas Ligand, FGF basic, KGF/FGF-7 FGF-19, Flt-3 Ligand, G-CSF, GDF-15, GM-CSF, CXCL1/GRO $\alpha$ , Growth Hormone (GH), HGF, ICAM-1/CD54, IFN- $\gamma$ , IGFBP-2, IGFBP-3, IL-1 $\alpha$ /IL-1F1, IL-1 $\beta$ /IL-1F2, IL-1ra/IL-1F3, IL-2, IL-3, IL-4, IL-5, IL-6, IL-8, IL-10, IL-11, IL-12 p70, IL-13, IL-15, IL-16, IL-17A, IL-18 BPa, IL-19, IL-22, IL-23, IL-24, IL-27, IL-31, IL-32 $\alpha$ / $\beta$ / $\gamma$ , IL-33, IL-34, CXCL10/IP-10, CXCL11/I-TAC, Kallikrein 3/PSA, Leptin, LIF, Lipocalin-2/NGAL, CCL2/MCP-1, CCL7/MCP-3, M-CSF, MIF, CXCL9/MIG, CCL3/CCL4/MIP-1 $\alpha$ / $\beta$ , CCL20/MIP-3 $\alpha$ , CCL19/MIP-3 $\beta$ , MMP-9, Myeloperoxidase, Osteopontin (OPN), PDGF-AA, PDGF-AB/BB, Pentraxin 3/TSG-14, CXCL4/PF4, RAGE, CCL5/RANTES, RBP4, Relaxin-2, Resistin, CXCL12/SDF-1 $\alpha$ , Serpin E1/PAI-1, SHBG, ST2/IL-1 R4, CCL17/TARC, TFF3, Tfr, TGF- $\alpha$ , Thrombospondin-1, TIM-3, TNF- $\alpha$ , uPAR, VCAM-1, VEGF, Vitamin D BP	
Validated Sample Type	Suggested Sample Size
Cell Culture Supernates	200–500 $\mu$ L
Cell Lysates	100–200 $\mu$ g
Serum	50–200 $\mu$ L
Tissue Lysates	100–200 $\mu$ g
Plasma (EDTA/Heparin)	50–200 $\mu$ L

Human Kidney Biomarker Array Kit	
Catalog # ARY019	4 Tests
Contains 4 membranes – each spotted in duplicate with 38 different kidney biomarker antibodies	
Adiponectin, Aminopeptidase N, Angiotensinogen, Annexin V, $\beta$ 2-Microglobulin, CCL2/MCP-1, Clusterin, CXCL1/GRO $\alpha$ , CXCL16, Cyr61, Cystatin C, DPPIV, EGF, EGF R, FABP1/L-FABP, Fetuin A, IL-1ra, IL-6, IL-10, KIM-1/TIM-1/HAVCR, Lipocalin-2/NGAL, MMP-9, Nephilysin, PSA, RAGE, RBP4, Renin, Resistin, SCF, Serpin A3, TNF- $\alpha$ , TNF RI, TFF3, Thrombospondin-1, TWEAK, uPA, VCAM-1, VEGF-A	
Validated Sample Type	Suggested Sample Size
Cell Culture Supernates	200–500 $\mu$ L
Cell Lysates	20–500 $\mu$ g
Urine	50–500 $\mu$ L
Tissue Lysates	20–500 $\mu$ g

Human XL Oncology Array Kit	
Catalog # ARY026	4 Tests
Contains 4 membranes – each spotted in duplicate with 84 different cancer-related antibodies	
AFP, Amphiregulin, Angiopoietin-1, ANGPTL4, ENPP-2/Autotaxin, AXL, BCL-X, CA125/MUC-16, E-Cadherin, VE-Cadherin, CAP-G, CA-9, Cathepsin B, Cathepsin D, Cathepsin S, CEACAM-5, Decorin, DKK-1, DLL-1, EGF R/ErbB1, Endoglin/CD105, Endostatin, Enoxase 2, eNOS, EpCAM, ER- $\alpha$ , ErbB2, ErbB3, ErbB4, FGF basic, FoxC2, FKHR, Galectin-3, GM-CSF, HCG, HGF R/c-Met, HIF-1 $\alpha$ , HNF-3 $\beta$ , HO-1/HMOX1, ICAM-1/CD54, CD25/IL-2 R $\alpha$ , IL-6, CXCL8/IL-8, IL-18 Bpa, KLK-3/PSA, KLK-5, KLK-6, Leptin (OB) , Lumican, CCL2/MCP-1, CCL8/MCP-2, CCL7/MCP-3, M-CSF, Mesothelin, CCL3/MIP-1 $\alpha$ , CCL20/MIP-3 $\alpha$ , MMP-2, MMP-3, MMP-9, MSP/MST1, MUC-1, Nectin-4, Osteopontin, p27/Kip1, p53, PDGF-AA, CD31/PECAM-1, Progesterone R, Progranulin, Prolactin, Prostatin, E-Selectin, Maspin, PAI-1/Serpin E1, SNAIL, SPARC, Survivin, Tenascin-C, THBS-1, TIE-2, UPA-1, VCAM-1, VEGF, Vimentin	
Validated Sample Type	Suggested Sample Size
Cell Culture Supernates	200–500 $\mu$ L
Cell Lysates	100–200 $\mu$ g
Serum	50–200 $\mu$ L
Tissue Lysates	100–200 $\mu$ g
Plasma (EDTA/Heparin)	50–200 $\mu$ L
Saliva	50–200 $\mu$ L
Urine	50–200 $\mu$ L
Human Milk	50–200 $\mu$ L

# Kits Available (continued)

## Human

Human NFκB Pathway Array Kit	
Catalog # ARY029	4 Tests
Contains 4 membranes – each spotted in duplicate with 45 different cytokine antibodies	
ASC, BCL10, CARD6, CD40/TNFRSF5, cIAP1/BIRC2, cIAP2/BIRC3, FADD/MORT1, Fas/TNFRSF6/CD95, ikBα, ikBε, IKK1/IKKα/CHUK, IKK2/IKKβ, IKKγ/NEMO, IL-1 R1, IL-17 RA, IL-18 Rα, IRAK1, IRF5, IRF8, JNK1/2, JNK2, LTBR/TNFRSF3, Metaherin/AEG-1, MYD88, NFκB1, NFκB2, NGF R/TNFRSF16, p53, p53 (pS46), RelA/p65, RelA/P65 (pS529), c-Rel, SHARPIN, SOCS6, STAT1p91, STAT1 (pY701), STAT2, STAT2 (pY689), STING/TMEM173, TLR2, TNF R1/TNFRSF1A, TNF RII/TNFRSF1B, TRAF2, TRAIL R1/DR4, TRAIL R2/DR5.	
Validated Sample Type	Suggested Sample Size
Cell Lysates	200–500 µg

Human Phospho-Immune Receptor Array Kit	
Catalog # ARY004B	4 Tests
Contains 4 membranes – each spotted in duplicate with 59 different anti-immune receptor antibodies	
2B4/SLAMF4, BLAME/SLAMF8, BTLA, CD3ε, CD5, CD6, CD28, CD84/SLAMF5, CD229/SLAMF3, CEACAM-1, CLEC-1, CLEC-2, CRACC/SLAMF7, CTLA-4/CD152, DCIR/CLEC4A, Dectin-1/CLEC7A, DNAM-1, Fcε RII/CD23, Fcγ RIIA, Fcγ RIIIB/B, FcRH1/IRTA5, FcRH2/IRTA4, FcRH4/IRTA1, FcRH5/IRTA2, ILT2/CD85j, ILT3/CD85k, ILT4/CD85d, ILT5/CD85a, ILT6/CD85e, Integrin β3/CD61, KIR2DL4, LAIR-1, LAIR-2, LMIR1/CD300A, LMIR2/CD300C, LMIR3/CD300LF, LMIR6/CD300LE, MDL-1/CLEC5A, NKp30/NCR3, NKp44/NCR2, NKp46/NCR1, NKp80/KLRF1, NTB-A/SLAMF6, PD-1, PECAM/CD31, SHIP-1, SHP-1, SHP-2, Siglec-2/CD22, Siglec-3/CD33, Siglec-5, Siglec-7, Siglec-9, Siglec-10, SIRP-b1, SLAM/CD150/SLAMF1, TREM-1, TREM-2, TREML1/TLT-1	
Validated Sample Type	Suggested Sample Size
Cell Lysates	50–500 µg

Human Phospho-Kinase Array Kit	
Catalog # ARY003B	4 Tests
Contains 4 membranes – each spotted in duplicate with 45 different anti-kinase antibodies	
Akt (S473)*, Akt (T308)*, AMPKα1*, AMPKα2, βcatenin*, Chk-2, c-Jun*, CREB*, EGF R (Y1068), ERK1/2*, FAK*, Fgr, Fyn*, GSK-3α/β*, Hck, HSP27, HSP60, JNK pan*, Lck, Lyn, MSK1/2*, eNOS, p27 (T198), p38α*, p53 (S392), p53 (S46), p53 (S15), p70 S6 Kinase (T389)*, p70 S6 Kinase (T421/S424)*, PDGF R β (Y751), PLCγ-1, PRAS40 (T246), Pyk2, RSK1/2/3*, Src*, STAT2, STAT3*, STAT3 (S727), STAT5a*, STAT5a/b*, STAT5b*, STAT6, TOR*, WNK-1 (T60), Yes * Crossreacts with mouse and/or rat	
Validated Sample Type	Suggested Sample Size
Cell Lysates	200–600 µg

Human Phospho-RTK Array Kit	
Catalog # ARY001B	4 Tests
Contains 4 membranes – each spotted in duplicate with 49 different anti-RTK antibodies	
ALK/CD246, Axl, DDR1, DDR2, Dtk, EGF R, EphA1, EphA2, EphA3, EphA4, EphA5, EphA6, EphA7, EphA10, EphB1, EphB2, EphB3, EphB4, EphB6, ErbB2, ErbB3, ErbB4, FGF R1, FGF R2α, FGF R3, FGF R4, Fit-3/Fit-2, HGF R/c-MET, IGF-1 R, Insulin R/CD220, M-CSF R, Mer, MSP R/Ron, MuSK, PDGF Rα, PDGF Rβ, c-Ret, ROR1, ROR2, Ryk, SCF R/c-kit, Tie-1, Tie-2, TrkA, TrkB, TrkC, VEGF R1/Fit-1, VEGF R2/KDR, VEGF R3/Fit-4	
Validated Sample Type	Suggested Sample Size
Cell Culture Supernates	200–500 µL
Cell Lysates	20–300 µg
Serum	10–50 µL

Human Protease Array Kit	
Catalog # ARY021B	4 Tests
Contains 4 membranes – each spotted in duplicate with 35 different protease antibodies	
ADAM8, ADAM9, ADAMTS1, ADAMTS13, Cathepsin A, Cathepsin B, Cathepsin C/DPPI, Cathepsin D, Cathepsin E, Cathepsin L, Cathepsin S, Cathepsin V, Cathepsin X/Z/P, DPPIV/CD26, Kallikrein 3/PSA, Kallikrein 5, Kallikrein 6, Kallikrein 7, Kallikrein 10, Kallikrein 11, Kallikrein 13, MMP-1, MMP-2, MMP-3, MMP-7, MMP-8, MMP-9, MMP-10, MMP-12, MMP-13, Neprilysin/CD10, Presenilin-1, Proprotein Convertase 9, Proteinase 3, uPA/Urokinase	
Validated Sample Type	Suggested Sample Size
Cell Culture Supernates	200–500 µL
Cell Lysates	100–200 µg
Serum	50–200 µL
Tissue Lysates	100–200 µg
Plasma (EDTA/Heparin)	50–200 µL
Saliva	50–200 µL
Urine	50–200 µL

Human Protease Inhibitor Array Kit	
Catalog # ARY023	4 Tests
Contains 4 membranes – each spotted in duplicate with 32 different protease antibodies	
APP, Cystatin A, Cystatin B, Cystatin C, Cystatin E/M, EMMPRIN, Fetuin B, HAI-1, HAI-2, HE4/WFDC2, Latexin, Lipocalin-1, Lipocalin-2/NGAL, RECK, Serpin A5, Serpin A8/AGT, Serpin A9/Centerin, Serpin A12, Serpin B5/Maspin, Serpin B6, Serpin B8, Serpin E1/PAI-1, Serpin F1/PEDF, Testican 1/SPOCK1, Testican 2/SPOCK2, TFPI, TFPI-2, TIMP-1, TIMP-2, TIMP-3, TIMP-4, Trappin-2/Elafin	
Validated Sample Type	Suggested Sample Size
Cell Culture Supernates	200–500 µL
Cell Lysates	100–200 µg
Serum	50–200 µL
Tissue Lysates	100–200 µg
Plasma (EDTA/Heparin)	50–100 µL
Saliva	50–100 µL
Urine	50–100 µL



# Human

Human Protease/Protease Inhibitor Array Kit	
Catalog # ARY025	4 Tests
Contains 4 membranes – 2 Protease arrays (see catalog # ARY021B for content) and 2 Protease Inhibitor arrays (see catalog # ARY023 for content)	

Human Pluripotent Stem Cell Array Kit	
Catalog # ARY010	8 Tests
Contains 8 membranes – each spotted in duplicate with 15 different stem cell marker antibodies	
E-Cadherin, $\alpha$ -Fetoprotein, GATA-4*, Goosecoid, HCG, HNF-3/FoxA2*, Nanog, Oct-3/4, Otx2, PDX-1/PF1*, Snail, SOX2*, SOX17, TP63/TP73L, VEGF R2/KDR * Crossreacts with mouse	
Validated Sample Type	Suggested Sample Size
Cell Lysates	50–300 $\mu$ g

Human Soluble Receptor Array Kit, Hematopoietic Panel	
Catalog # ARY011	4 Tests
Contains 4 membranes – 2 spotted in duplicate with 48 different hematopoietic antibodies and 2 spotted in duplicate with 57 common antibodies	
<b>Hematopoietic Panel:</b> CD5, CD6, CD30/TNFRSF8, CD40/TNFRSF5, CD43, CD48/SLAMF2, CD59, CD84/SLAMF5, CD97, CD163, CD229/SLAMF3, Chitinase 3-like 1, CRP, CRTAM, CXCL16, DNAM-1, DPPIV, IFN- $\gamma$ R2, IL-2 R $\alpha$ , IL-2 R $\beta$ , IL-6 R, Integrin $\alpha$ 3/CD49c, Integrin $\alpha$ 4/CD49d, Integrin $\alpha$ 5/CD49e, Integrin $\alpha$ 6/CD49f, Integrin $\alpha$ 9, Integrin $\alpha$ E/CD103, Integrin $\alpha$ L/CD11a, Integrin $\alpha$ M/CD11b, Integrin $\alpha$ X/CD11c, LAG-3, MMP-9, MMR, Myeloperoxidase, Resistin, L-Selectin, Siglec-5, Siglec-6, Siglec-7, Siglec-9, Siglec-10, TIM-3, TLR2, TLR4, TNF RII/TNFRSF1A, TRACP, TRANCE/TNFSF11, TREM-1	
<b>Common Analytes Panel:</b> ACE, ADAM8, ADAM9, ADAM10, ALCAM, Amphiregulin, APP pan, BACE-1, BCAM, C1q R1/CD93, CD9, CD23/Fc $\epsilon$ RII, CD31/PECAM-1, CD36/SR-B3, CD40 Ligand/TNFSF5, CD44H, CD58/LFA-3, CD90/Thy1, CD99, CD155/PVR, CEACAM-1, CX3CL1/Fractalkine, CXCL8/IL-8, EMMPRIN, Endoglin, Epiregulin, Galectin-1, Galectin-3, Galectin-3BP, HB-EGF, ICAM-2, IL-1 RII, IL-15 R $\alpha$ , Integrin $\beta$ 1/CD29, Integrin $\beta$ 2/CD18, Integrin $\beta$ 3/CD61, Integrin $\beta$ 4/CD104, Integrin $\beta$ 5, Integrin $\beta$ 6, JAM-A, Lipocalin-2/NGAL, LOX-1, MD-1, MMP-2, NCAM-1/CD56, NCAM-L1, Osteopontin, PAR1, Pref-1, RECK, Stabilin-1, TACE, Thrombospondin, TIMP-1, TIMP-2, TIMP-3, TNF RII/TNFRSF1B	
Validated Sample Type	Suggested Sample Size
Cell Culture Supernates	200–500 $\mu$ L
Cell Lysates	20–300 $\mu$ g
Serum	10–50 $\mu$ L

Human Soluble Receptor Array Kit, Non-Hematopoietic Panel	
Catalog # ARY012	4 Tests
Contains 4 membranes – 2 spotted in duplicate with 62 different non-hematopoietic antibodies and 2 spotted in duplicate with 57 common antibodies	
<b>Non-Hematopoietic Panel:</b> ADAM15, $\beta$ IG-H3, BMPR-IB, Cadherin-4, Cadherin-11, Cadherin-13, E-Cadherin, N-Cadherin, P-Cadherin, VE-Cadherin, Cathepsin D, CD40/TNFRSF5, CEACAM-5, CHL-1, Clusterin, Coagulation Factor II/Thrombin, COMP, CRELD2, Desmoglein 2, ECM-1, EGF R, Endoglycan, EpCAM, ErbB2, ErbB3, ErbB4, ESAM, Galectin-2, HPRG, Integrin $\alpha$ 3/CD49c, Integrin $\alpha$ 5/CD49e, Integrin $\alpha$ 6/CD49f, Integrin $\alpha$ 9, Integrin $\alpha$ V/CD51, Jagged 1, JAM-B, JAM-C, LRP-6, MCAM/CD146, MEPE, MUCDHL, Nectin-2, Nectin-4, Neurotrimin, Notch-1, NrCAM, Periostin, Podocalyxin, E-Selectin, Semaphorin 3A, SREC-I, SREC-II, Stanniocalcin 1, Syndecan-1, Syndecan-4, Thrombospondin-2, TIMP-4, TROP-2, VAP-1, VCAM-1, VEGF R1, VEGF R2	
<b>Common Analytes Panel:</b> ACE, ADAM8, ADAM9, ADAM10, ALCAM, Amphiregulin, APP pan, BACE-1, BCAM, C1q R1/CD93, CD9, CD23/Fc $\epsilon$ RII, CD31/PECAM-1, CD36/SR-B3, CD40 Ligand/TNFSF5, CD44H, CD58/LFA-3, CD90/Thy1, CD99, CD155/PVR, CEACAM-1, CX3CL1/Fractalkine, CXCL8/IL-8, EMMPRIN, Endoglin, Epiregulin, Galectin-1, Galectin-3, Galectin-3BP, HB-EGF, ICAM-2, IL-1 RII, IL-15 R $\alpha$ , Integrin $\beta$ 1/CD29, Integrin $\beta$ 2/CD18, Integrin $\beta$ 3/CD61, Integrin $\beta$ 4/CD104, Integrin $\beta$ 5, Integrin $\beta$ 6, JAM-A, Lipocalin-2/NGAL, LOX-1, MD-1, MMP-2, NCAM-1/CD56, NCAM-L1, Osteopontin, PAR1, Pref-1, RECK, Stabilin-1, TACE, Thrombospondin, TIMP-1, TIMP-2, TIMP-3, TNF RII/TNFRSF1B	
Validated Sample Type	Suggested Sample Size
Cell Culture Supernates	200–500 $\mu$ L
Cell Lysates	100–300 $\mu$ g
Serum	10–50 $\mu$ L

Human Ubiquitin Array Kit	
Catalog # ARY027	4 Tests
Contains 4 membranes – each spotted in duplicate with 49 different ubiquitin-related antibodies	
A20/TNFAIP3, ATF4, Bcl-2, $\beta$ -TrCP1/BTRC, Caspase-8, CBL, Cyclin D1/CCND1, CD44, cIAP-1/HAIP-2, cIAP-2/HAIP-1, COX-2/PTGS2, EGF R, ER- $\alpha$ /NR3A1, ErbB2, ErbB3, ErbB4, FASN, F-box protein 15/FBXO15, FBXW7/Cdc4, FGF R2, HGF R/c-met, HIF-1 $\alpha$ , HSP70, HSP90AA1/HSP90a, IGF-I R, I $\kappa$ B $\alpha$ , I $\kappa$ B $\beta$ , IKK $\gamma$ /NEMO, Insulin R, IRAK1, IRF3, IRS1, M-CSF R, MSP R/Ron, Nrf2/NFE2L2, NIK/MAP3K14, p21CDKN1A/Cip1, p53, PDGF R $\alpha$ , PDGF R $\beta$ , RIP1, SCF R/c-Kit, Tfr, TNF R1/TNFRSF1A, TRAF-2, TRAF-3, TRAF-6, Trk A, VEGF R3/Flt-4, Ubiquitin	
Validated Sample Type	Suggested Sample Size
Cell Lysates (ligand treated cells)	200–300 $\mu$ g
Cell Lysates (proteasome inhibitor treated cells)	25–100 $\mu$ g

# Kits Available (continued)

## Mouse

Mouse Adipokine Array Kit	
Catalog # ARY013	4 Tests
Contains 4 membranes – each spotted in duplicate with 38 different obesity-related antibodies	
Adiponectin, AgRP, Angiopoietin-like 3, CCL2/MCP-1, CCL5/RANTES, CRP, DPPIV, Endocan, Fetuin A, FGF acidic, FGF-21, HGF, ICAM-1, IGF-I, IGF-II, IGFBP-1, IGFBP-2, IGFBP-3, IGFBP-5, IGFBP-6, IL-6, IL-10, IL-11, Leptin, LIF, Lipocalin-2/NGAL, M-CSF, Oncostatin M, Pentraxin 2, Pentraxin 3, Pref-1, RAGE, RBP4, Resistin, Serpin E1/PAI-1, TIMP-1, TNF- $\alpha$ , VEGF	
Validated Sample Type	Suggested Sample Size
Cell Culture Supernates	500 $\mu$ L
Cell Lysates	400 $\mu$ g
Serum	50 $\mu$ L
Tissue Lysates	400 $\mu$ g

Mouse Angiogenesis Array Kit	
Catalog # ARY015	4 Tests
Contains 4 membranes – each spotted in duplicate with 53 different angiogenesis-related antibodies	
ADAMTS1*, Amphiregulin*, Angiogenin*, Angiopoietin-1*, Angiopoietin-3*, Coagulation Factor III/Tissue Factor, CXCL10/CRG-2*, CXCL16*, Cyr61*, DLL4*, DPPIV*, EGF, Endoglin, Endostatin/Collagen XVIII*, Endothelin-1*, FGF acidic*, FGF basic*, FGF-7, Fractalkine, GM-CSF, HB-EGF, HGF*, IGFBP-1*, IGFBP-2*, IGFBP-3*, IL-1 $\alpha$ , IL-1 $\beta$ , IL-10, KC*, Leptin, MCP-1*, MIP-1 $\alpha$ , MMP-3 (pro and active), MMP-8 (pro)*, MMP-9 (pro and active)*, NOV,* Osteopontin*, PD-ECGF*, PDGF-AA*, PDGF-AB/PDGF-BB*, Pentraxin-3, Platelet Factor 4*, PIGF-2*, Prolactin*, Proliferin, SDF-1, Serpin E1*, Serpin F1, Thrombospondin-2*, TIMP-1, TIMP-4*, VEGF*, VEGF-B*	
* Crossreacts with rat	
Validated Sample Type	Suggested Sample Size
Cell Culture Supernates	400-750 $\mu$ L (up to 1mL)
Cell Lysates	200 $\mu$ g
Serum	25 $\mu$ L
Tissue Homogenates	200 $\mu$ g

Mouse Chemokine Array Kit	
Catalog # ARY020	4 Tests
Contains 4 membranes – each spotted in duplicate with 25 different chemokine antibodies	
CCL11/Eotaxin, CCL12/MCP-5, CCL2/JE/MCP-1, CCL21/6CKine, CCL22/MDC, CCL27/CTACK, CCL28, CCL3/CCL4 (MIP-1 $\alpha$ /MIP-1 $\beta$ ), CCL5/RANTES, CCL6/C10, CCL8/MCP-2, CCL9/10/MIP-1 $\gamma$ , Chemerin, Complement Component C5/C5a, CX3CL1/Fractalkine, CXCL1/KC, CXCL2/MIP-2, CXCL9/MIG, CXCL10/IP-10/CRG-2, CXCL11/I-TAC, CXCL12/SDF-1, CXCL13/BLC/BCA-1, CXCL16, IL-16, LIX	
Validated Sample Type	Suggested Sample Size
Cell Culture Supernates	200–500 $\mu$ L
Cell Lysates	100–200 $\mu$ g
Serum	50–200 $\mu$ L
Tissue Lysates	100–200 $\mu$ g

Mouse Apoptosis Array Kit	
Catalog # ARY031	8 Tests
Contains 8 membranes – each spotted in duplicate with 21 different antibodies	
Bad, Fas/TNFRSF6/CD95, MCL-1, Bcl-2, HIF- $\alpha$ , p27/Kip1, Bcl-x, HO-1/HMOX1/HSP32, p53, Cleaved Caspase-3, HO-2/HMOX2, SMAC/Diablo, Catalase, HSP27, TNF R1/TNFRSF1A, Claspin, HSP60, TRAIL R2/TNFRSF10B, Cytochrome c, HSP70/HSPA1A, XIAP	
Validated Sample Type	Suggested Sample Size
Cell Lysates	200–400 $\mu$ g

Mouse XL Cytokine Array Kit	
Catalog # ARY028	4 Tests
Contains 4 membranes – each spotted in duplicate with 111 different cytokine antibodies	
Adiponectin/Acrp30, Amphiregulin, Angiopoietin-1, Angiopoietin-2, Angiopoietin-like 3, BAFF/BLyS/TNFSF13B, C1q R1/CD93, CCL2/JE/MCP-1, CCL3/CCL4 MIP-1 $\alpha$ / $\beta$ , CCL5/RANTES, CCL6/C10, CCL11/Eotaxin, CCL12/MCP-5, CCL17/TARC, CCL19/MIP-3 $\beta$ , CCL20/MIP-3 $\alpha$ , CCL21/6CKine, CCL22/MDC, CD14, CD40/TNFRSF5, CD160, Chemerin, Chitinase 3-like 1, Coagulation Factor III/, Tissue Factor, Complement Component C5/C5a, Complement Factor D, C-Reactive Protein/CRP, CX3CL1/Fractalkine, CXCL1/KC, CXCL2/MIP-2, CXCL9/MIG, CXCL10/IP-10, CXCL11/I-TAC, CXCL13/BLC/BCA-1, CXCL16, Cystatin C, Dkk-1, DPPIV/CD26, EGF, Endoglin/CD105, Endostatin, Fetuin A/AHSG, FGF acidic, FGF-21, Flt-3 Ligand, Gas6, G-CSF, GDF-15, GM-CSF, HGF, ICAM-1/CD54, IFN- $\gamma$ , IGFBP-1, IGFBP-2, IGFBP-3, IGFBP-5, IGFBP-6, IL-1 $\alpha$ /IL-1F1, IL-1 $\beta$ /IL-1F2, IL-1ra/IL-1F3, IL-2, IL-3, IL-4, IL-5, IL-6, IL-7, IL-10, IL-11, IL-12p40, IL-13, IL-15, IL-17A, IL-22, IL-23, IL-27, IL-28, IL-33, LDL R, Leptin, LIF, Lipocalin-2/NGAL, LIX, M-CSF, MMP-2, MMP-3, MMP-9, Myeloperoxidase, Osteopontin (OPN), Osteoprotegerin/TNFRSF11B, PD-ECGF/Thymidine phosphorylase, PDGF-BB, Pentraxin 2/SAP, Pentraxin 3/TSG-14, Periostin/OSF-2, Pref-1/DLK-1/FA1, Proliferin, Proprotein Convertase 9/PCSK9, RAGE, RBP4, Reg3G, Resistin, E-Selectin/CD62E, P-Selectin/CD62P, Serpin E1/PAI-1, Serpin F1/PEDF, Thrombopoietin, TIM-1/KIM-1/HAVCR, TNF- $\alpha$ , VCAM-1/CD106, VEGF, WISP-1	
Validated Sample Type	Suggested Sample Size
Cell Culture Supernates	200–500 $\mu$ L
Cell Lysates	100–200 $\mu$ g
Serum	50–200 $\mu$ L
Tissue Lysates	100–200 $\mu$ g
Urine	25–50 $\mu$ L

Mouse Cytokine Array Kit, Panel A	
Catalog # ARY006	4 Tests
Contains 4 membranes – each spotted in duplicate with 40 different cytokine antibodies	
BLC, C5a, CCL1/I-309, CCL2/MCP-1, CCL3/MIP-1 $\alpha$ , CCL4/MIP-1 $\beta$ , CCL5/RANTES, CCL11/Eotaxin, CCL12/MCP-5, CCL17/TARC, CXCL1/KC, CXCL9/MIG, CXCL10/IP-10, CXCL11/I-TAC, CXCL12/SDF-1, G-CSF, GM-CSF, ICAM-1, IFN- $\gamma$ , IL-1 $\alpha$ , IL-1 $\beta$ , IL-1ra, IL-2, IL-3, IL-4, IL-5, IL-6, IL-7, IL-10, IL-12 p70, IL-13, IL-16, IL-17, IL-23, IL-27, M-CSF, MIP-2, TIMP-1, TNF- $\alpha$ , TREM-1	
Validated Sample Type	Suggested Sample Size
Cell Culture Supernates	50–100 $\mu$ L
Cell Lysates	100 $\mu$ g
Serum	250 $\mu$ L
Tissue Lysates	200 $\mu$ g
Plasma (EDTA/Heparin)	100 $\mu$ L

Mouse Phospho-RTK Array Kit	
Catalog # ARY014	4 Tests
Contains 4 membranes – each spotted in duplicate with 39 different anti-RTK antibodies	
Axl, c-Ret, Dtk, EphA1, EphA2, EphA3, EphA6, EphA7, EphA8, EphB1, EphB2, EphB4, EphB6, EGF R, ErbB2, ErbB3, ErbB4, FGF R2 (IIIc), FGF R3, FGF R4, Flt-3, HGF R, Insulin R, IGF-I R, M-CSF R, Mer, MSP R, MuSK, PDGF R $\alpha$ , PDGF R $\beta$ , SCF R, Tie-1, Tie-2, TrkA, TrkB, TrkC, VEGF R1, VEGF R2, VEGF R3	
Validated Sample Type	Suggested Sample Size
Cell Lysates	50–300 $\mu$ g

○ Array for intracellular factors

# Rat

Rat Adipokine Array Kit	
Catalog # ARY016	4 Tests
Contains 4 membranes – each spotted in duplicate with 30 different obesity-related antibodies	
Angiopoietin-like 3, CCL2/MCP-1, CCL5/RANTES, DPPIV, Endocan, FGF-21, HGF, ICAM-1, IGF-I, IGF-II, IGFBP-1, IGFBP-2, IGFBP-3, IGFBP-5, IGFBP-6, IL-1 $\beta$ , IL-6, IL-10, IL-11, Leptin, LIF, Lipocalin-2/NGAL, M-CSF, Pref-1, RAGE, Resistin, Serpin E1/PAI-1, TIMP-1, TNF- $\alpha$ , VEGF	
Validated Sample Type	Suggested Sample Size
Cell Culture Supernates	200–500 $\mu$ L
Cell Lysates	100–500 $\mu$ g
Serum	50–200 $\mu$ L
Tissue Lysates	100–500 $\mu$ g

Rat Cytokine Array Kit, Panel A	
Catalog # ARY008	4 Tests
Contains 4 membranes – each spotted in duplicate with 29 different cytokine antibodies	
CCL3/MIP-1 $\alpha$ , CCL5/RANTES, CCL20/MIP-3 $\alpha$ , CNTF, CX3CL1/Fractalkine, CXCL1/CINC-1, CXCL2/CINC-3, CXCL3/CINC-2 $\alpha$ / $\beta$ , CXCL7/Thymus Chemokine-1, CXCL9/MIG, CXCL10/IP-10, GM-CSF, ICAM-1, IFN- $\gamma$ , IL-1 $\alpha$ , IL-1 $\beta$ , IL-1ra, IL-2, IL-3, IL-4, IL-6, IL-10, IL-13, IL-17, LIX, L-Selectin, TIMP-1, TNF- $\alpha$ , VEGF	
Validated Sample Type	Suggested Sample Size
Cell Culture Supernates	500 $\mu$ L
Cell Lysates	200 $\mu$ g
Plasma (EDTA/Heparin)	150 $\mu$ L
Tissue Lysates	400 $\mu$ g

Rat XL Cytokine Array Kit	
Catalog # ARY030	4 Tests
Contains 4 membranes – each spotted in duplicate with 79 different antibodies	
Adiponectin, CCL2/JE/MCP-1, CCL3/CCL4/MIP-1 $\alpha$ / $\beta$ , CCL5/RANTES, CL11/Eotaxin, CCL17/TARC, CCL20/MIP-3 $\alpha$ , CCL21/6Ckine, CCL22/MDC, Clusterin, CNTF, CX3CL1/Fractalkine, CXCL2/GRO $\beta$ /MIP-2/CINC-3, CXCL7/Thymus Chemokine-1, Cyr61/CCN1, Cystatin C, DPPIV/CD26, EGF, EG-VEGF, Endostatin, Fetuin A, FGF acidic, FGF-7, FGF-21, Fibulin 3, Flt-3 Ligand, Galectin-1, Galectin-3, G-CSF, GDF-15, GM-CSF, Hepassocin, HGF, ICAM-1/CD54, IFN- $\gamma$ , IGF-I, IGFBP-2, IGFBP-3, IGFBP-5, IGFBP-6, IL-1 $\alpha$ /IL-1F1, IL-1 $\beta$ /IL-1F2, IL-1ra/IL-1F3, IL-2, IL-3, IL-4, IL-6, IL-13, IL-17A, IL-22, Jagged 1, LIF, Lipocalin-2/NGAL, LIX, MAG/Siglec-4a, MMP-2, MMP-3, MMP-9, Nephrilysin/CD10, NOV/CCN3, NT-3, NT-4, Osteopontin (OPN), Osteoprotegerin/TNFRSF11B, PDGF-BB, Pref-1/DLK1/FA1, Prolactin, RAGE, RBP4, Resistin, RGM-A, SCF, Serpin E1/PAI-1, TIM-1/KIM-1/HAVCR, TNF- $\alpha$ , TWEAK/TNFSF12, VCAM-1/CD106, VEGF, WISP-1/CCN	
Validated Sample Type	Suggested Sample Size
Cell Culture Supernates	200–500 $\mu$ L
Cell Lysates	100–200 $\mu$ g
Serum	50–20 $\mu$ L
Tissue Lysates	100–500 $\mu$ g
Urine	25–50 $\mu$ g

# Biomarker Testing Service

Let the experts who develop and manufacture the Proteome Profiler Arrays test your samples. Together with a dedicated project manager, our expert scientists will process your samples, run the array, and send you data.

Get answers to your research questions quickly and economically by outsourcing the sample processing and analysis.



Learn more | [rndsystems.com/custom](https://rndsystems.com/custom)

**R&D** SYSTEMS

**NOVUS**  
BIOLOGICALS

**TOCRIS**

protein **simple**

**A&D**

**bio-techne**

Global [info@bio-techne.com](mailto:info@bio-techne.com) [bio-techne.com/find-us/distributors](http://bio-techne.com/find-us/distributors) TEL +1 612 379 2956  
North America TEL 800 343 7475 Europe | Middle East | Africa TEL +44 (0)1235 529449  
China [info.cn@bio-techne.com](mailto:info.cn@bio-techne.com) TEL +86 (21) 52380373

[bio-techne.com](http://bio-techne.com)

