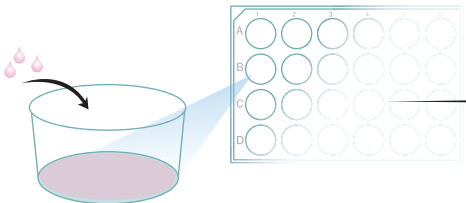


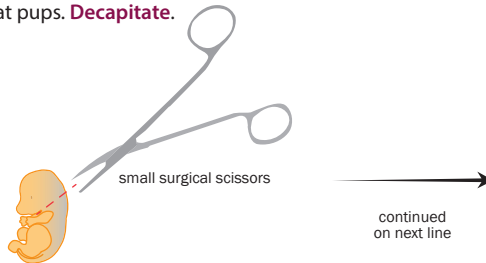
**Day 1**

**Prepare** cell culture plates by coating with Poly-D-Lysine and Mouse Laminin I.

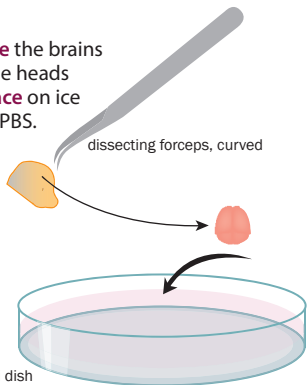


**Day 2**

**Recover** E17-18 rat embryos or P1-2 rat pups. **Decapitate.**



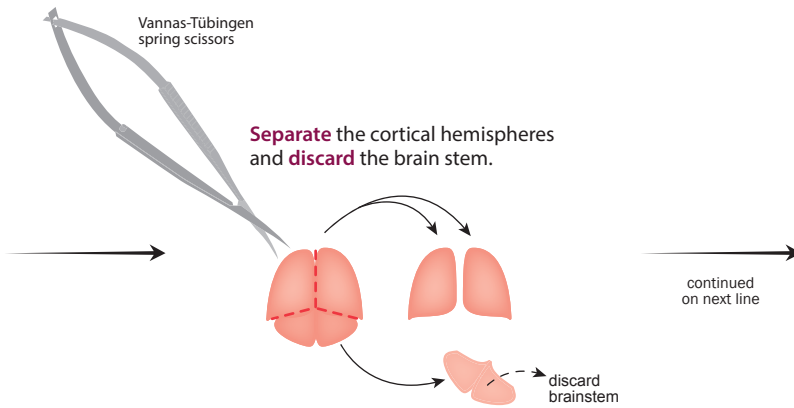
**Remove** the brains from the heads and **place** on ice in cold PBS.



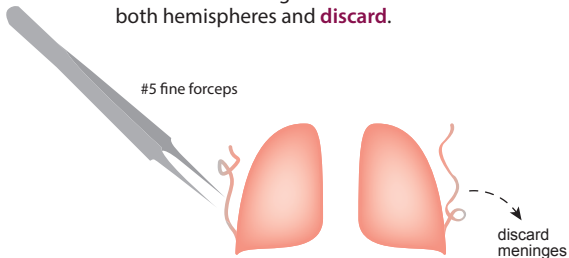
60 x 15 mm petri dish

Vannas-Tübingen spring scissors

**Separate** the cortical hemispheres and **discard** the brain stem.

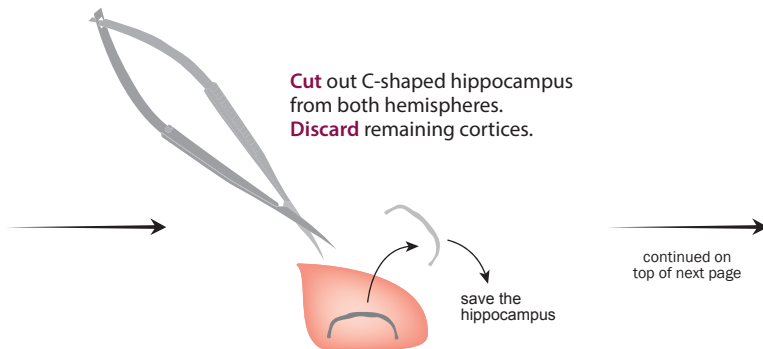


**Peel off** the meninges from both hemispheres and **discard**.

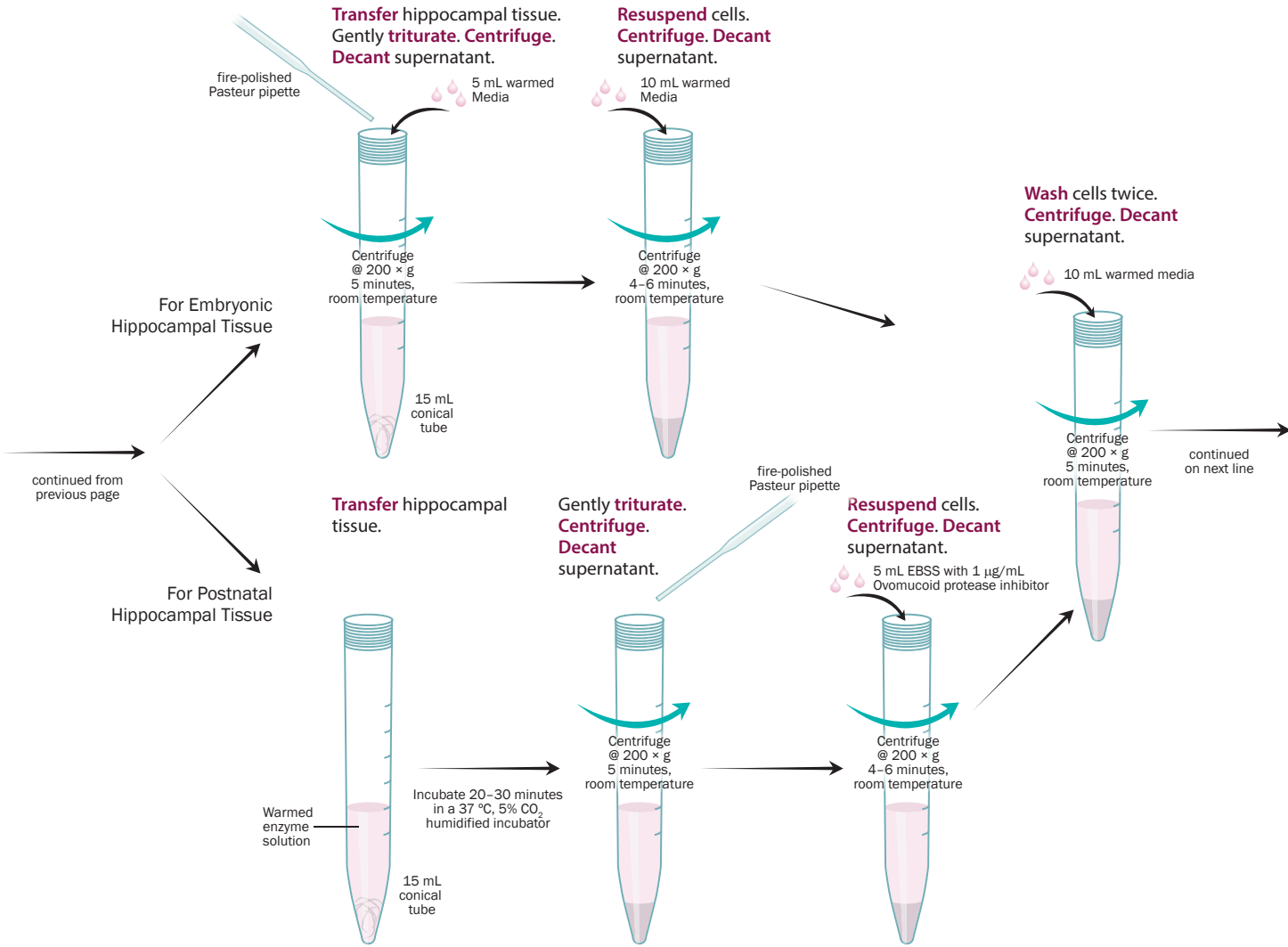


#5 fine forceps

**Cut out** C-shaped hippocampus from both hemispheres. **Discard** remaining cortices.



continued on top of next page



**Resuspend** cells in warmed culture media. **Count** cells.

**Reconstitute** hippocampal neurons with warmed culture media. **Seed** neurons onto Poly-D-Lysine/Laminin I-coated cell culture plates or  $\mu$ -slides.

**Culture** hippocampal neurons for desired amount of time. **Exchange** media every 3–4 days.

